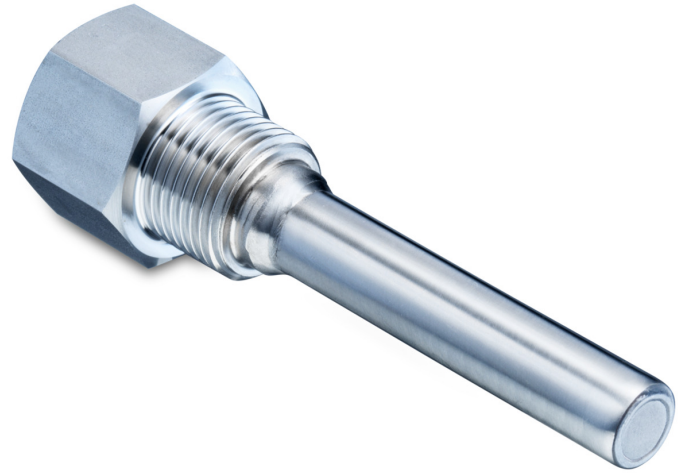


Overview

- For standard temperature sensors with threaded instrument connection
- Robust design
- For hygienic process connection - sensor Ø6 and Ø8 mm
- For threaded process connection - sensor Ø6 and Ø8 mm



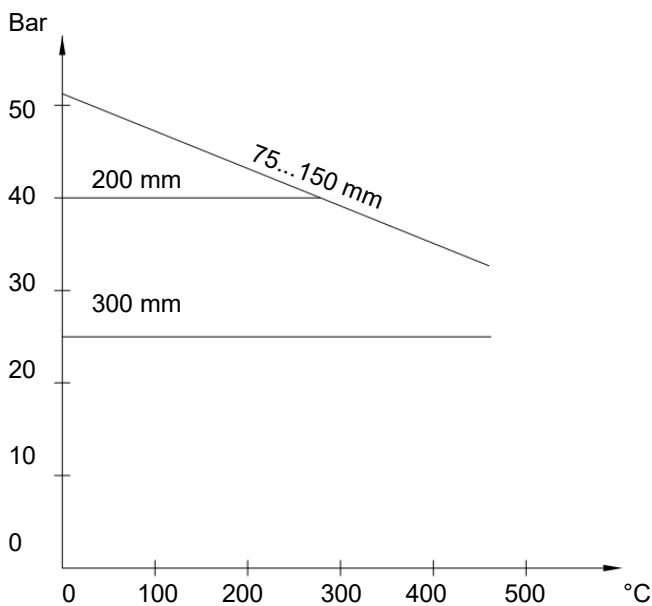
Technical data

Process connection

Instrument connection	G 1/2 A ISO 228-1 G 1/2 A DIN 3852-E G 1/2 A DIN 3852-A
Process connection	R 1/2 ISO 7-1 G 1/2 A ISO 228-1 G 3/4 A ISO 228-1 ISO 2852 (Tri-Clamp), DN 33.7; 38, Ø 50.5 M20×1.5 ISO 965 Welding connection Ø 35
Material	AISI 316L (1.4404)
Surface roughness wetted parts	Ra ≤ 0.8 µm (ISO 2852 (Tri-Clamp) / welding connection)

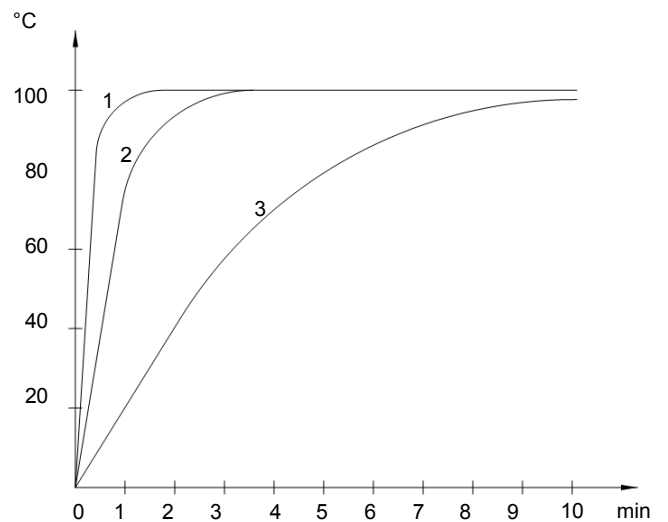
Operating conditions

Pressure



Note: Maximum pressure is reduced and not documented when above 300 mm

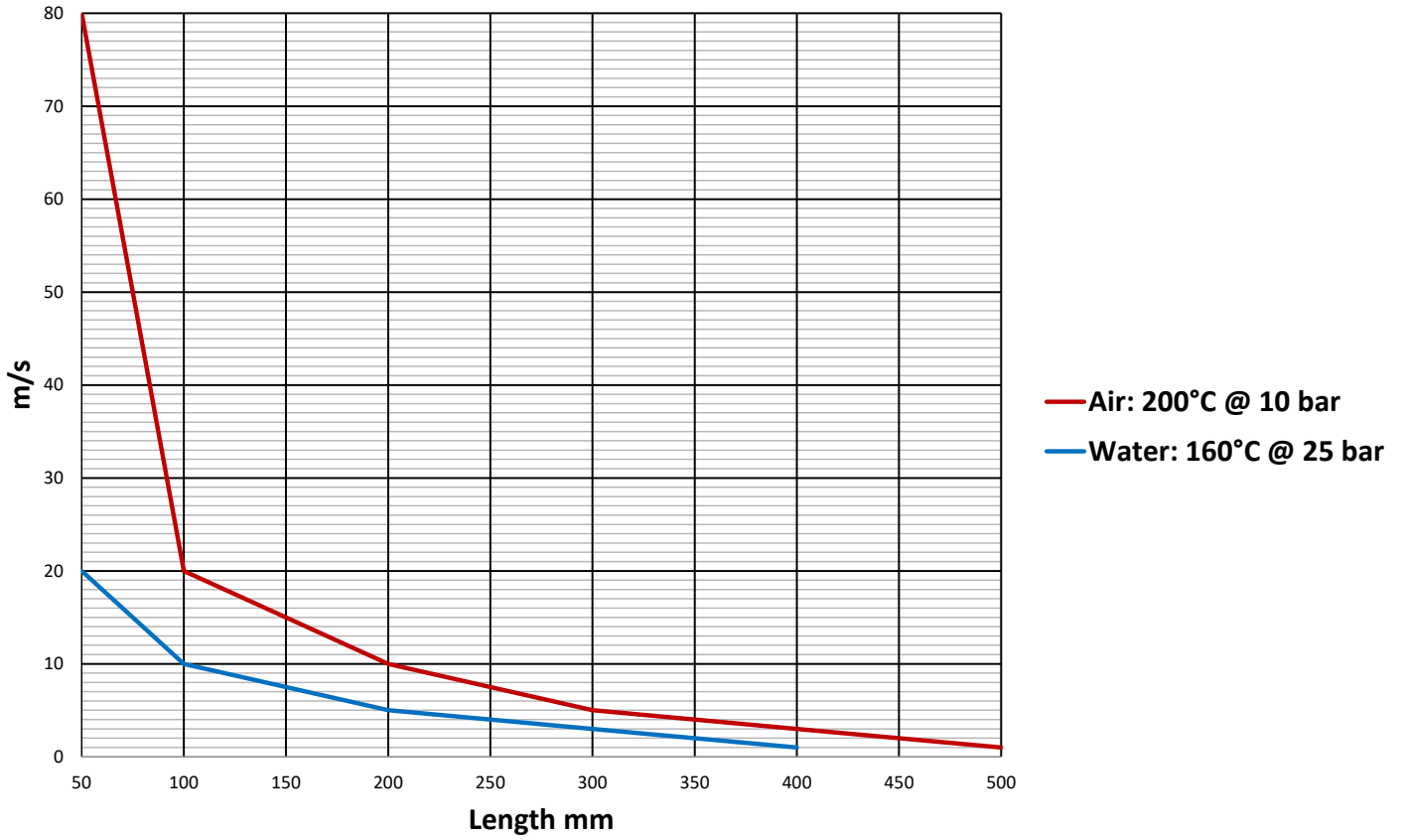
Response time



- 1: Sensor without thermowell (embedded sensor)
- 2: Sensor with thermowell, with thermal compound
- 3: Sensor with thermowell, without thermal compound

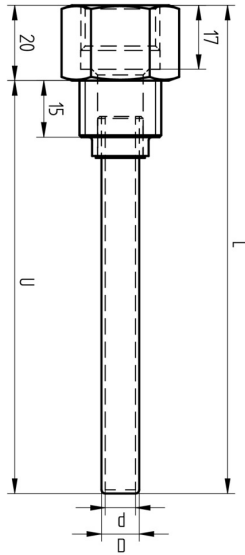
Operating conditions

Flow / Length

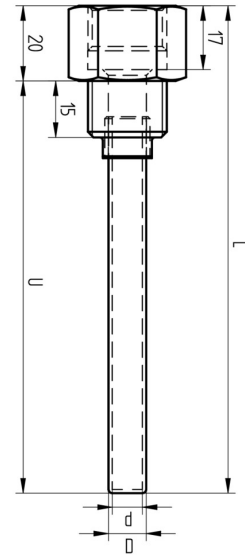


Dimensional drawings (mm)

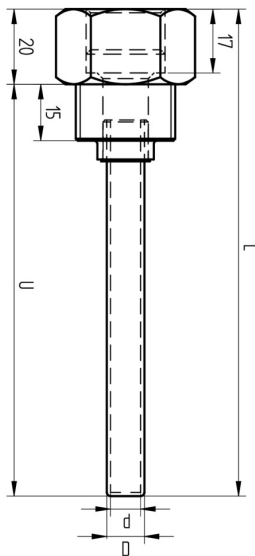
Process connection



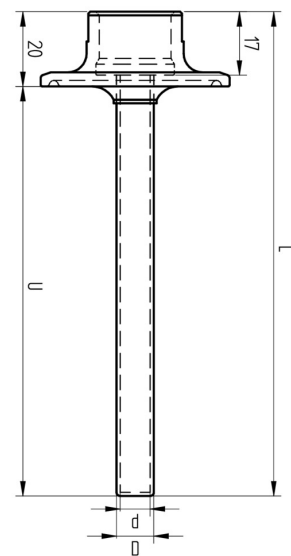
R 1/2 ISO 7/1 (BCID: R06)
D: Ø10 / Ø12 mm
d: Ø8 / Ø10 mm



G 1/2 A ISO 228-1 (BCID: G06)
D: Ø10 / Ø12 mm
d: Ø8 / Ø10 mm



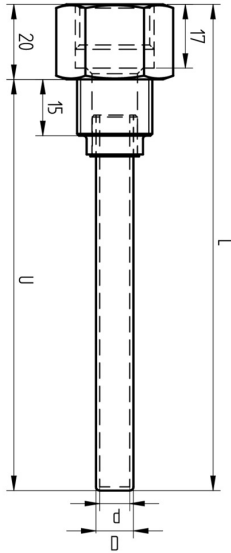
G 3/4 A ISO 228-1 (BCID: G10)
D: Ø10 / Ø12 mm
d: Ø8 / Ø10 mm



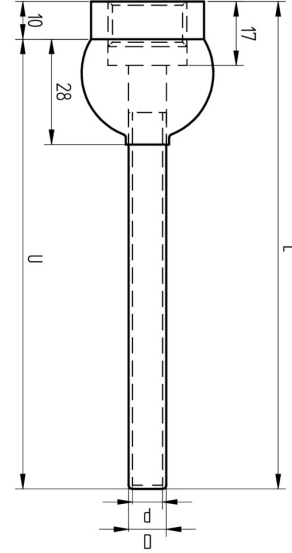
Tri-Clamp Ø 50.5 (BCID: C04)
D: Ø10 / Ø12 mm
d: Ø8 / Ø10 mm

Dimensional drawings (mm)

Process connection



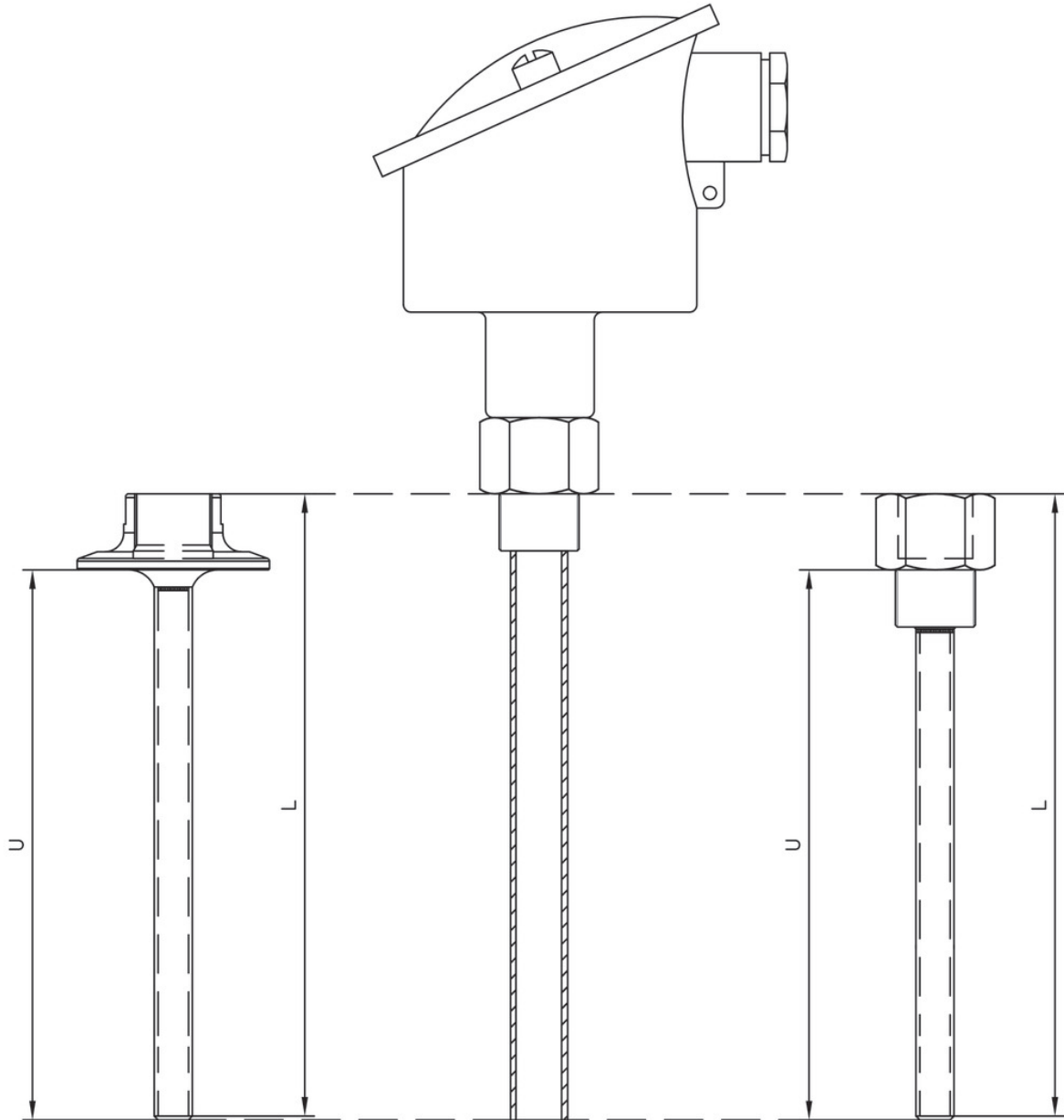
M20 × 1.5 ISO 261 / ISO 965 (BCID: M08)
D: Ø10 / Ø12 mm
d: Ø8 / Ø10 mm



Inclined mounting (welding ball), Ø35 mm (BCID: W30)
D: Ø10 / Ø12 mm
d: Ø8 / Ø10 mm

Dimensional drawings (mm)

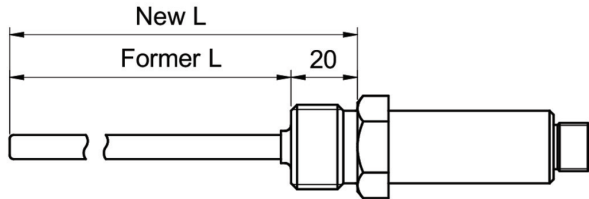
Process connection



Thermowell length U vs. instrument length L

Dimensional drawings (mm)

Process connection



For the TE2, the former "L" specification was based on measurement from the bottom of the thread to the tip, whereas the new L measurement includes the thread. For the correct ZPT4 length add 20 mm:
Former L + 20 mm = L for ZPT4

Ordering information

Ordering key - Configuration possibilities see website

	ZPT	4	-	5	##	6	#	.	####
Type	ZPT								
Thermowell									
Application									
For standard temperature sensor with threaded instrument connection		4							
Instrument connection									
G 1/2 A ISO 228-1 (G06)				5					
G 1/2 A DIN 3852-E (G51)									
G 1/2 A DIN 3852-A (G44)									
Process connection									
R 1/2 ISO 7-1 (R06)						14			
G 1/2 A ISO 228-1 (G06)						15			
G 3/4 A ISO 228-1 (G10)						34			
ISO 2852 (Tri-Clamp), DN 33.7; 38, Ø 50.5 (C04)						38			
M20 × 1.5 ISO 261 / ISO 965 (M08)						54			
Inclined mounting (welding ball), Ø35 mm (W30)						60			
Sensor tube material									
Stainless steel, AISI 316L							6		
Immersion tube diameter									
Ø6 mm								5	
Ø8 mm								7	
Instrument length (L)									
25 - 3000 mm									####

2024-07-02 The product features and technical data specified do not express or imply any warranty. Technical modifications subject to change.