

## Overview

- Easy mounting in confined a place since no radial space required
- For applications with limited space consumption



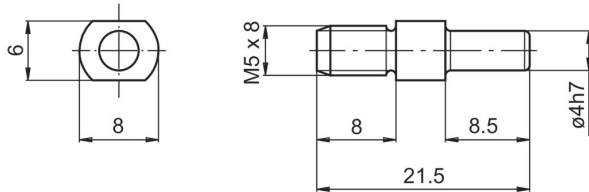
## Description

- Use either rubber buffer Z 119.036 or Z 119.037 according to encoder model. Fix shoulder screw onto the mounting surface. Push encoder onto the drive shaft and position the shoulder screw in the encoder's rubber buffer.

## Scope of delivery

Included: Shoulder screw M5

## Dimensions



## Assembly drawing

