

Overview

- retro-reflective sensor
- 3,5 m
- pulsed PinPoint LED
- push-pull
- Teach-in and IO-Link
- connector M8 4 pin
- -25 ... 60 °C
- IP 68/69K & proTect+



Picture similar



Technical data

General data		Electrical data	
Type	Retro-reflective sensor	Current consumption max. (no load)	35 mA
Special type	Washdown design	Current consumption typ.	30 mA
Version	Transparency object detection	Voltage drop Vd	< 3 VDC
Light source	Pulsed PinPoint LED	Output function	Light / dark operate
Actual range Sb	3,5 m	Output circuit	Push-pull
Nominal range Sn	4 m	Output current	< 100 mA
Polarization filter	Yes	Short circuit protection	Yes
Minimal signal attenuation	10 % / 20 % / 30 %	Reverse polarity protection	Yes
Light indicator	LED yellow	Mechanical data	
Power on indication	LED green	Width / diameter	16,5 mm
Sensitivity adjustment	Teach-in and IO-Link	Height / length	34,7 mm
Wave length	630 nm	Depth	28,2 mm
Suppression of reciprocal influence	Yes	Type	Rectangular
Alignment optical axis	< 2°	Housing material	Stainless steel 1.4404 (V4A)
Approvals/certificates	Ecolab	Front (optics)	PMMA
Electrical data		Connection types	Connector M8 4 pin
Response time / release time	< 0,25 ms	Ambient conditions	
Voltage supply range +Vs	10 ... 30 VDC	Operating temperature	-25 ... +60 °C
		Protection class	IP 68/69K & proTect+

O300W.RP.T-GW1J.PVN

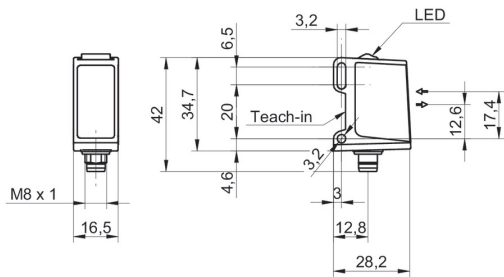
Retro-reflective sensors - washdown

Article number: 11157338

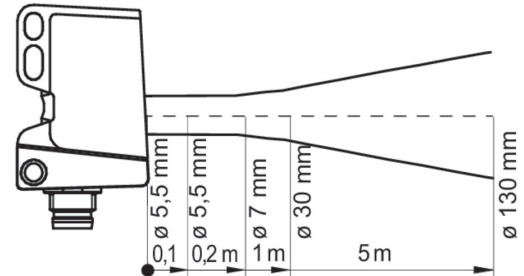
Remarks

- qTeach
- IO-Link: V1.1, filter functions, qTeach lock adjustable
- Signal attenuation adjustable

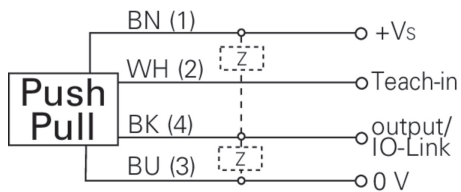
Dimension drawing



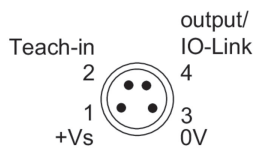
Beam characteristic (typically)



Connection diagram



Pin assignment



Excess gain curve

