

Overview

- Outstanding reliability and unrivalled immunity against ambient light
- Baumer PinPoint LED: Small, homogeneous light spot with sharp edges
- IO-Link interface independent of the switching output (Dual Channel)
- Extended parameterization options and additional diagnostic data
- Robust housing with stainless steel spacer sleeves



Picture similar



Technical data

General data

Type	Background suppression
Version	IO-Link dual channel
Sensing distance Tw	20 ... 120 mm
Sensing range Tb	3 ... 132 mm
Power on indication	LED green
Alignment / soiled lens indicator	Flashing output indicator
Output indicator	LED yellow
Sensing distance adjustment	IO-Link
Suppression of reciprocal influence	Yes
Beam type	Point
Alignment optical axis	< 1,5°

Light Source

Light source	Pulsed PinPoint LED
Wave length	644 nm

Electrical data

Response time / release time	< 0.4 ms (High Speed Mode)
Jitter	< 0.21 ms (High Speed Mode)
Voltage supply range +Vs	10 ... 30 VDC
Current consumption max. (no load)	45 mA (@ 10 VDC)
Current consumption typ.	16 mA (@ 24 VDC)
Voltage drop Vd	<2 VDC
Output function	Light / dark operate
Output circuit	Push-pull
Output current	50 mA
Short circuit protection	Yes

Electrical data

Reverse polarity protection	Yes
-----------------------------	-----

Communication interface

Interface	IO-Link V1.1
IO-Link port type	Class A
Baud rate	38,4 kBaud (COM 2)
Cycle time	≥ 2.7 ms
Process data length	32 Bit
Process data structure	Bit 0 = SSC1 (presence) Bit 2 = quality Bit 3 = alarm Bit 5 = SSC4 (counter) Bit 16-31 = 16 Bit measurement

Adjustable parameters

- Switching point
- Switching hysteresis
- Time filters
- LED status indicators
- Output logic
- Output circuit
- Counter
- Operation mode
- Deactivate the sensor element
- Find Me function
- Teach-in mode

Additional data

- Excess gain
- Operating cycles
- Device temperature

Mechanical data

Width / diameter	8 mm
Height / length	25.1 mm
Depth	15.8 mm
Design	Rectangular
Mechanical mounting	Sleeve smooth (stainless steel)
Housing material	Plastic (ASA, PMMA)

O200.GP-GW2I.72CV/A014

Diffuse sensors with background suppression - miniature

Article number: 11230668

Technical data

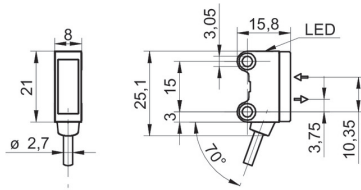
Mechanical data

Front (optics)	PMMA
Connection types	Cable 4 pin, 2 m
Cable characteristics	PVC / PVC 4 x 0.08 mm ²

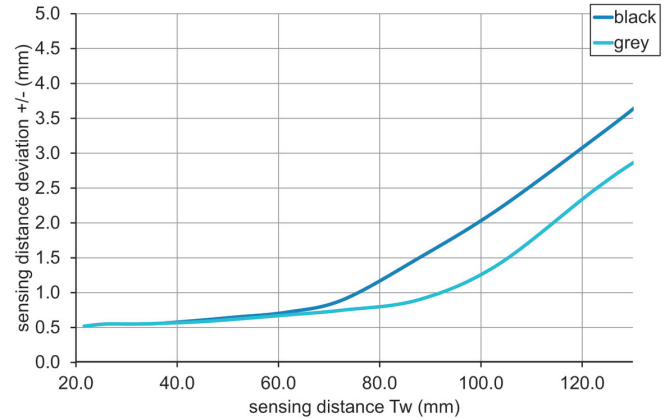
Ambient conditions

Protection class	IP 67
Operating temperature	-25 ... +50 °C

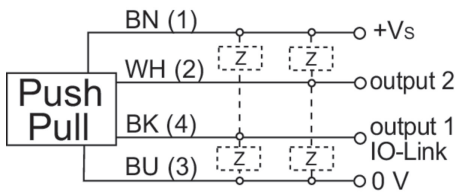
Dimension drawing



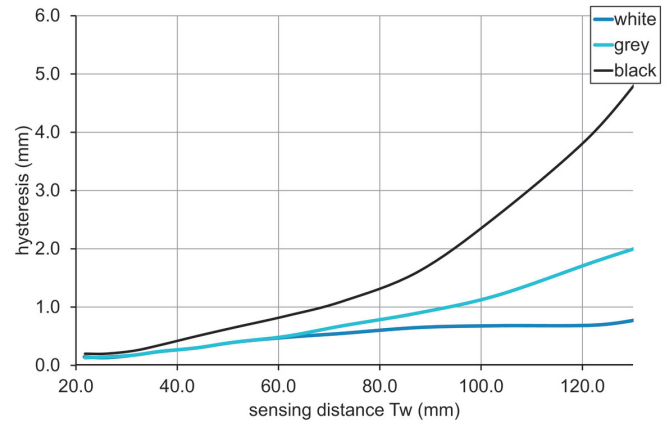
Sensing distance diagram



Connection diagram



Hysteresis curve



Beam characteristic (typically)

