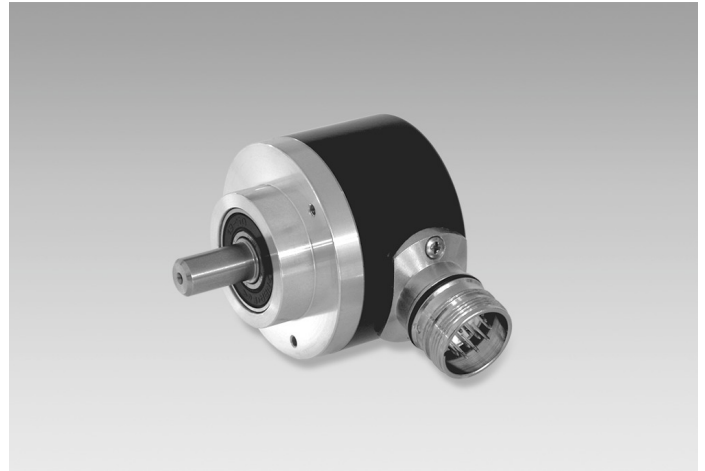


ITD 21 B14 Y11

Solid shaft $\varnothing 10$ mm with clamping flange
1000...6000 pulses per revolution

Overview

- Encoder with solid shaft $\varnothing 10$ mm
- Max. 6000 pulses per revolution
- Optical sensing method
- Centering alignment $\varnothing 36$ mm, mounting screw hole circle $\varnothing 48$ mm
- Industrial standard
- TTL or HTL output signals
- Flange connector radial



Technical data

Technical data - electrical ratings

Voltage supply	5 VDC ± 5 % 8...30 VDC
Reverse polarity protection	Yes
Consumption w/o load	≤ 100 mA
Pulses per revolution	1000 ... 6000
Reference signal	Zero pulse, width 90°
Sensing method	Optical
Output frequency	≤ 300 kHz (TTL) ≤ 160 kHz (HTL)
Output signals	A, B, N + inverted
Output stages	TTL linedriver (short-circuit proof) HTL push-pull (short-circuit proof)
Interference immunity	EN 61000-6-2
Emitted interference	EN 61000-6-3

Technical data - mechanical design

Size (flange)	$\varnothing 58$ mm
Shaft type	$\varnothing 10$ mm solid shaft (clamping flange)

Technical data - mechanical design

Admitted shaft load	≤ 40 N axial ≤ 60 N radial
Flange	Clamping flange
Protection EN 60529	IP 65
Operating speed	≤ 12000 rpm
Starting torque	≤ 0.01 Nm ($+20$ °C)
Material	Housing: aluminium, black, powder-coated Shaft: stainless steel
Operating temperature	$-20...+70$ °C $-20...+100$ °C
Relative humidity	90 % non-condensing
Resistance	EN 60068-2-6 Vibration 10 g, 55-2000 Hz EN 60068-2-27 Shock 30 g, 11 ms
Connection	Connector M23 type 2, 12-pin
Weight approx.	270 g

Optional

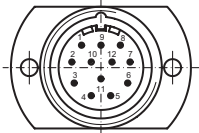
- Extended operating temperature range

ITD 21 B14 Y11

Solid shaft $\varnothing 10$ mm with clamping flange
1000...6000 pulses per revolution

Terminal assignment

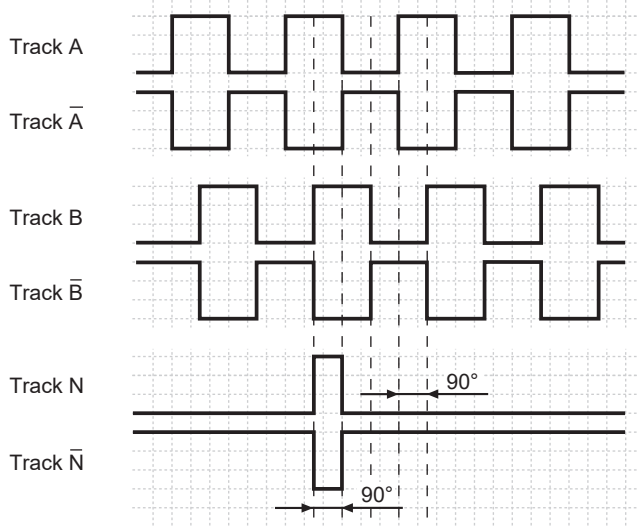
Connector	Assignment
Pin 5	Track A
Pin 6	Track A inv.
Pin 8	Track B
Pin 1	Track B inv.
Pin 3	Track N
Pin 4	Track N inv.
Pin 12	UB
Pin 10	GND
Pin 2	UB-Sense
Pin 11	GND-Sense
Pin 9	-
Pin 7	-



Output signals

Clockwise rotation when looking at the mounting side.

NI-Output signals



Trigger level

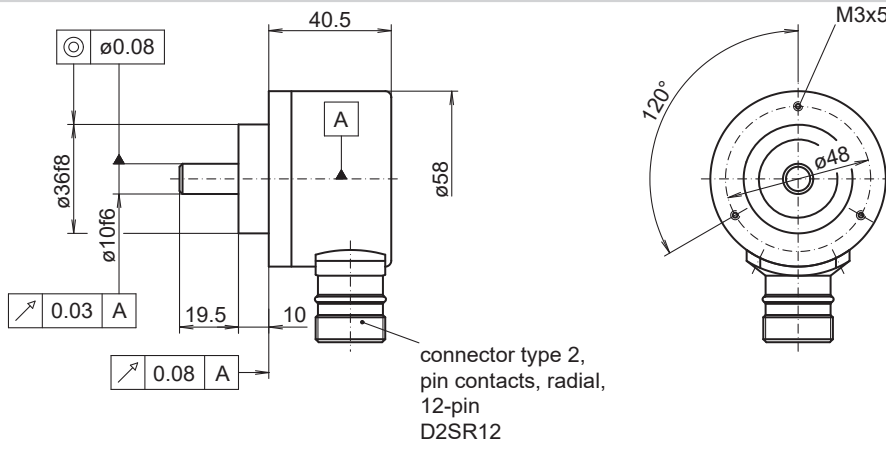
Outputs	Linedriver
Output level High	≥ 2.4 V
Output level Low	≤ 0.5 V
Load	≤ 70 mA

Outputs	Push-pull short-circuit proof
Output level High	$\geq UB - 3$ V
Output level Low	≤ 1.5 V
Load	≤ 70 mA

ITD 21 B14 Y11

Solid shaft $\varnothing 10$ mm with clamping flange
1000...6000 pulses per revolution

Dimensions



ITD 21 B14 Y11

 Solid shaft $\varnothing 10$ mm with clamping flange

1000...6000 pulses per revolution

Ordering reference

Product	ITD 21 B14 Y11	#####	#	NI	D2SR12	#	10	IP65
Pulse number	ITD 21 B14 Y11							
1000		1000						
1024		1024						
1200		1200						
1250		1250						
1440		1440						
1500		1500						
1800		1800						
2000		2000						
2048		2048						
2500		2500						
3000		3000						
3600		3600						
4000		4000						
4096		4096						
5000		5000						
6000		6000						
Voltage supply / signals								
5 VDC / TTL level, linedriver				T				
8...30 VDC / HTL level, push-pull				H				
8...30 VDC / TTL level, linedriver				R				
Output signals								
A, A inv, B, B inv, N, N inv				NI				
Connection								
Flange connector type 2, pin contacts, radial, 12-pin					D2SR12			
Operating temperature								
-20...+70 °C							S	
-20...+100 °C							E	
Flange / Solid shaft								
Clamping flange / $\varnothing 10$ mm								10
Protection								
IP 65								IP65