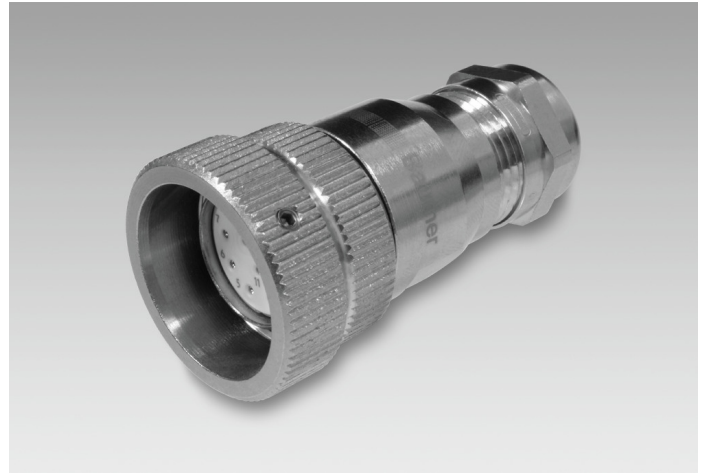


Female connector M23 with pin lock, 12-pin, CW

Article number: 11141051

Overview

- Connector M23: 12-pin, female, clockwise (CW). Suitable for cable connection to flange connector M23 (12-pin, male, counter-clockwise (CCW)).
- Knurled nut with pin lock
- EMC version
- Temperature range -40...+100 °C



Technical data

Technical data

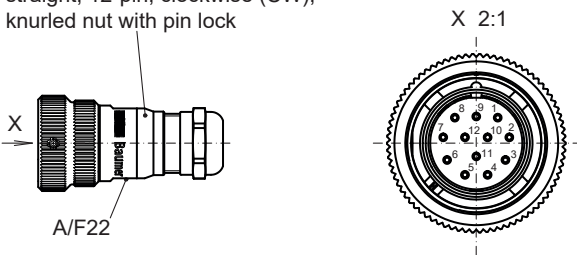
Core cross-section	Max. 1 mm ²
Cable entry	Solder

Technical data

Cable entry	ø5...10 mm
Operating temperature	-40...+100 °C

Dimensions

connector M23, female contacts, straight, 12-pin, clockwise (CW), knurled nut with pin lock



Suitable for

ExEIL580-B, ExEIL580-T, ExEIL580-SC, ExEIL580-SY, ExEIL580P-B, ExEIL580P-T, ExEIL580P-SC, ExEIL580P-SY