

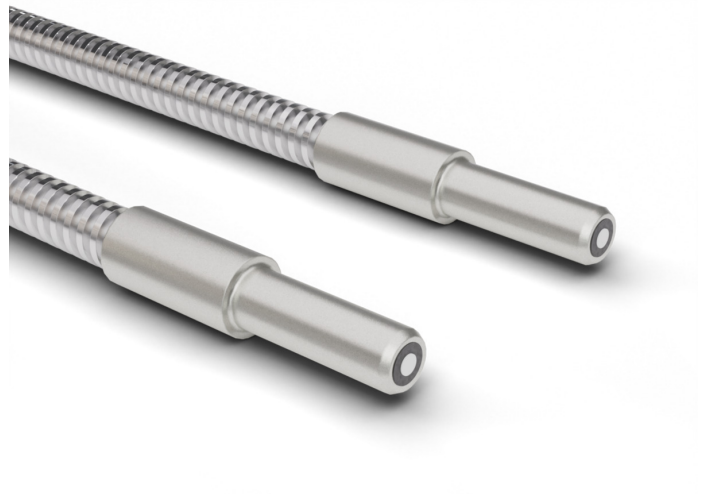
# FSF 050B2001

Glass fiber optic cable

Article number: 10210139

## Overview

- Through-beam type
- Actual range up to 500 mm
- Cylindrical smooth sensing head  $\varnothing 4$  mm
- Metal jacket 50 cm long
- Operating temperature up to +250 °C
- For rugged fiber optic sensors FVDM 15



Picture similar

## Technical data

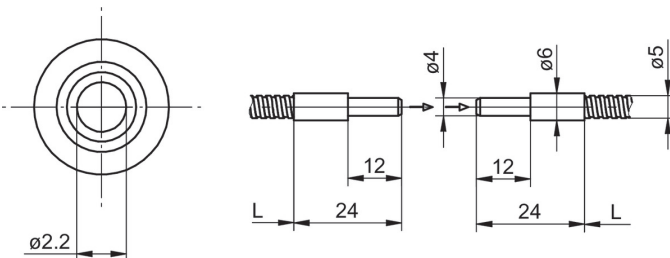
### General data

Particular characteristics	Smooth sensing head
Operating principle	Through-beam type
Actual range Sb	500 mm
Fiber optic head	Cylindrical smooth
Operating temperature	-25 ... +250 °C
Exit angle	60°
Fiber optics can be shortened to length	No
Integrated lens	No
Adaptable lens	No
Infrared light compatibility (1450 nm)	Yes
Smallest object recognizable	0.1 mm

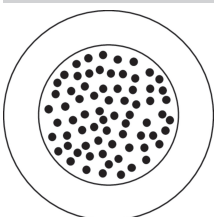
### Mechanical data

Width / diameter (head)	4 mm
Height / length (head)	24 mm
Material (head)	Aluminum
Bending radius (fixed)	15 mm
Bending radius (mobile)	30 mm
Cable jacket diameter	5 mm
Material cable jacket	Brass chromium plated
Fiber cross section	4 mm <sup>2</sup>
Material (fiber optic cable)	Glass
Length (fiber optic cable)	50 cm

## Dimension drawing



## Fiber arrangement



**FSF 050B2001**

Glass fiber optic cable

Article number: 10210139

**Accessories****Fitting fiber optic sensors**

10234639	FVDM 15N5103
10122368	FVDM 15N5103/S14
10234520	FVDM 15P5103
10239451	FVDM 15P5103/S14
10234519	FVDM 15P5130
10124952	FVDM 15P5130/S14

**Mounting accessories**

10103230	Replacement cap nut for fiber optics series 15
----------	--