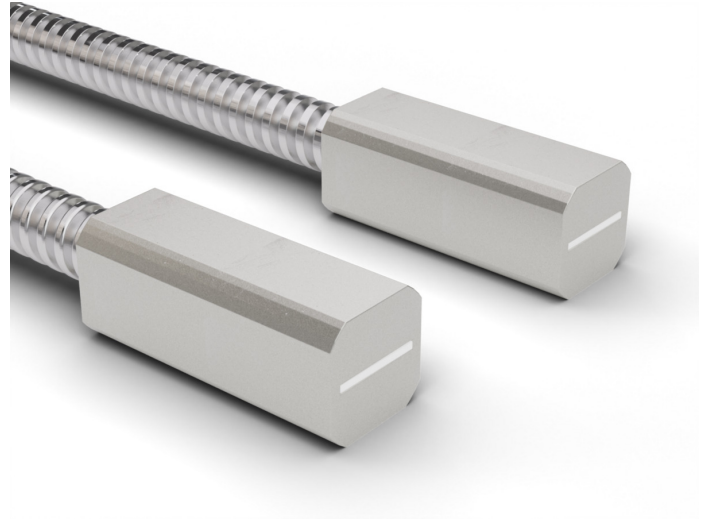


Overview

- Through-beam type
- Actual range up to 500 mm
- Rectangular sensing head 10 mm, array width 8 mm
- Metal jacket 50 cm long
- Operating temperature up to +250 °C
- For rugged fiber optic sensors FZAM 18



Picture similar

Technical data

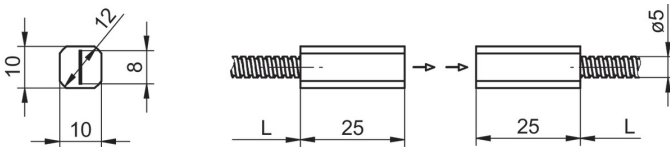
General data

Particular characteristics	Array (fine light barrier)
Operating principle	Through-beam type
Actual range Sb	500 mm
Fiber optic head	Rectangular
Operating temperature	-25 ... +250 °C
Exit angle	60°
Fiber optics can be shortened to length	No
Integrated lens	No
Adaptable lens	No
Infrared light compatibility (1450 nm)	Yes

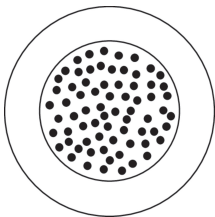
Mechanical data

Array width	8 mm
Width / diameter (head)	10 mm
Height / length (head)	25 mm
Depth (head)	16
Material (head)	Aluminum
Bending radius (fixed)	15 mm
Bending radius (mobile)	30 mm
Cable jacket diameter	5 mm
Material cable jacket	Brass chromium plated
Material (fiber optic cable)	Glass
Length (fiber optic cable)	50 cm

Dimension drawing



Fiber arrangement



Actual range diagram

Sensor	ActuaRange Sb [mm]
FZAM 30x5004	
FZAM 30x5001	
FZAM 18x1150 & FZAM 18x6460	500
FZAM 18x1155	310

Accessories

Fitting fiber optic sensors

10129020	FZAM 18N1150
10129021	FZAM 18N1150/S14
10129023	FZAM 18N1155
10128874	FZAM 18N6460
10128875	FZAM 18N6460/S14
10127712	FZAM 18P1150
10128111	FZAM 18P1150/S14
10127711	FZAM 18P1155
10128118	FZAM 18P6460
10127710	FZAM 18P6460/S14

Accessories

Mounting accessories

10101958

Adjusting plate series 18