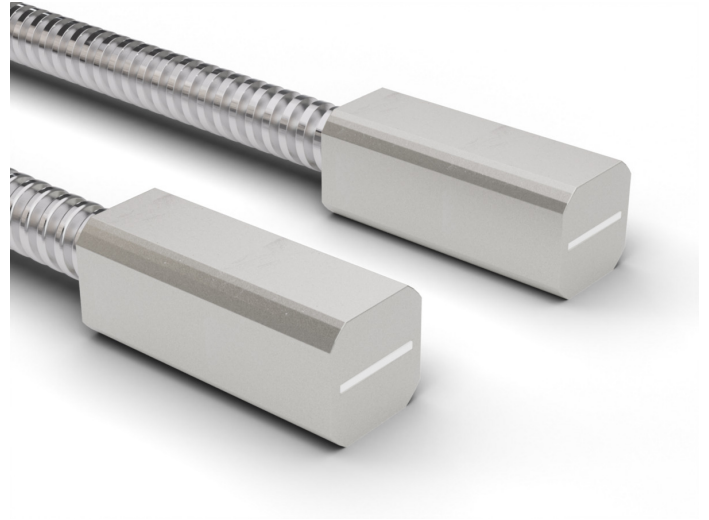


Overview

- Through-beam type
- Actual range up to 500 mm
- Rectangular sensing head 10 mm, array width 8 mm
- Metal jacket 50 cm long
- Operating temperature up to +250 °C
- For rugged fiber optic sensors FZAM 18

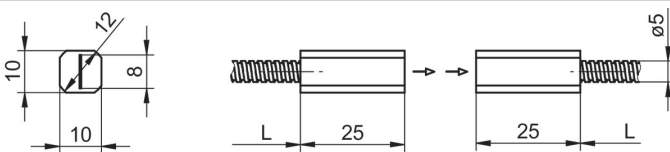


Picture similar

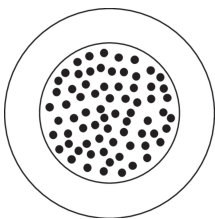
Technical data

General data		Mechanical data	
Operating principle	Through-beam type	Array width	8 mm
Actual range Sb	500 mm	Width / diameter (head)	10 mm
Fiber optic head	Rectangular	Height / length (head)	25 mm
Operating temperature	-25 ... +250 °C	Depth (head)	16
Exit angle	60°	Material (head)	Aluminum
Fiber optics can be shortened to length	No	Bending radius (fixed)	15 mm
Integrated lens	No	Bending radius (mobile)	30 mm
Adaptable lens	No	Cable jacket diameter	5 mm
Infrared light compatibility (1450 nm)	Yes	Material cable jacket	Brass chromium plated
Smallest object recognizable	0.1 mm	Material (fiber optic cable)	Glass
		Length (fiber optic cable)	50 cm

Dimension drawing



Fiber arrangement



Actual range diagram

Sensor	Actual Range Sb [mm]
FZAM 30x5004	
FZAM 30x5001	
FZAM 18x1150 & FZAM 18x6460	500
FZAM 18x1155	310

Accessories

Fitting fiber optic sensors	
10129020	FZAM 18N1150
10129021	FZAM 18N1150/S14
10129023	FZAM 18N1155
10128874	FZAM 18N6460
10128875	FZAM 18N6460/S14
10127712	FZAM 18P1150
10128111	FZAM 18P1150/S14
10127711	FZAM 18P1155
10128118	FZAM 18P6460
10127710	FZAM 18P6460/S14

Accessories

Mounting accessories

10101958

Adjusting plate series 18