

Installation Manual

CANopen Toolsuite

Software version 2

Baumer Electric AG
Hummelstrasse 17
8501 Frauenfeld · Switzerland
Telefon +41 (0)52 728 11 22
Telefax +41 (0)52 728 11 44
E-Mail: sales.ch@baumer.com
www.baumer.com

14.10.2013
Subject to technical and design modifications,
errors and omissions excepted

Installation_Manual_CANOpenToolsuite_V2.x.x_rev02.docx

Installation Manual CANOpen Toolsuite

1	Requirements.....	2
2	Windows XP (32bit/64bit).....	3
2.1	.NET Framework 3.5.....	3
2.2	IXXAT VCI V3 Driver.....	3
2.3	CANOpen Toolsuite	6
3	Windows 7 (32bit/64bit).....	8
3.1	.NET Framework 3.5.....	8
3.2	IXXAT VCI V3 Driver.....	8
3.3	CANOpen Toolsuite	10
4	Windows 8 (32bit/64bit).....	12
4.1	.NET Framework 3.5.....	12
4.2	IXXAT VCI V3 Driver.....	13
4.3	CANOpen Toolsuite	15

1 Requirements

To use the CANOpenToolsuite (or parts of it like CANMaster, FirmwareMaster, etc.) beware of the following requirements:

- Operating system: Windows XP, Windows 7, Windows 8
- .NET Framework 3.5
- VCI driver version 3.2 or higher (Windows XP), VCI Driver 3.5.1 or higher (Windows 7, Windows 8), (http://www.ixxat.de/download_vci_v3_de.html)

Important: In order to install software and drivers administrator rights are needed.

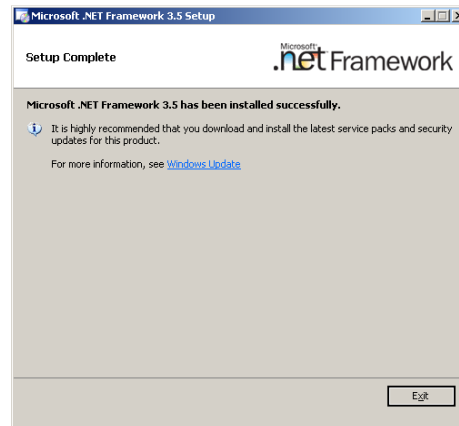
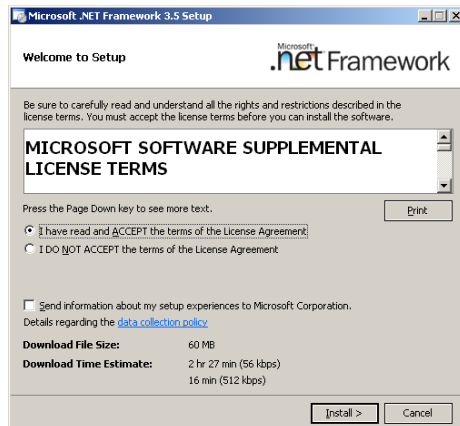
2 Windows XP (32bit/64bit)

2.1 .NET Framework 3.5

Download the .Net Framework 3.5 Setup from Microsoft:

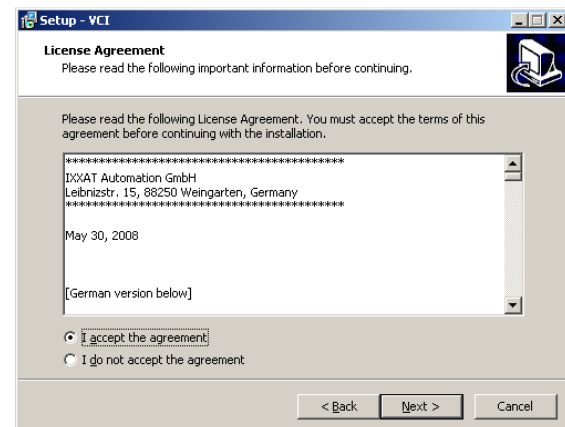
<http://www.microsoft.com/de-ch/download/details.aspx?id=21>

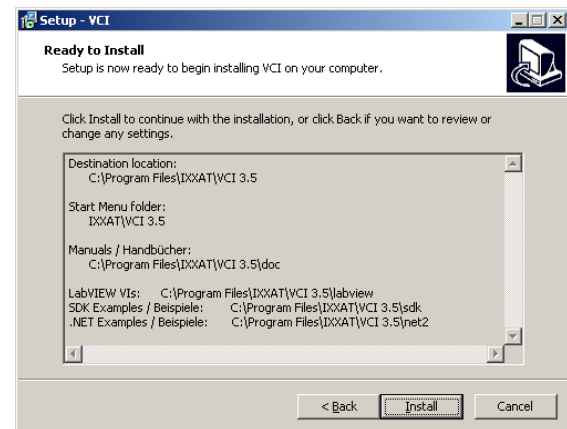
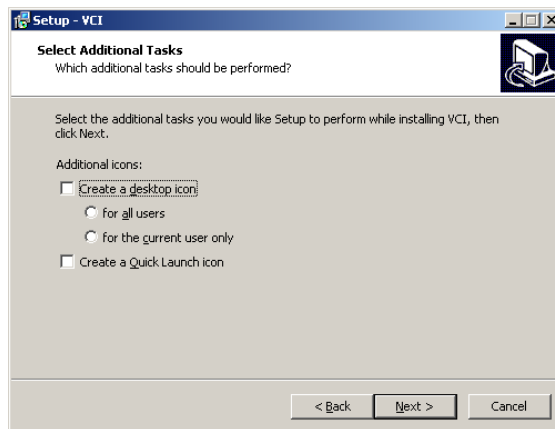
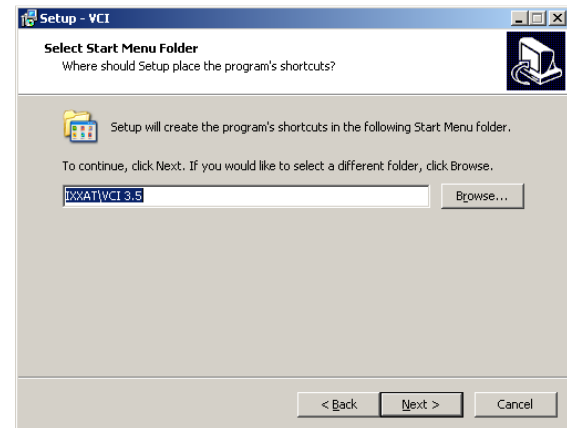
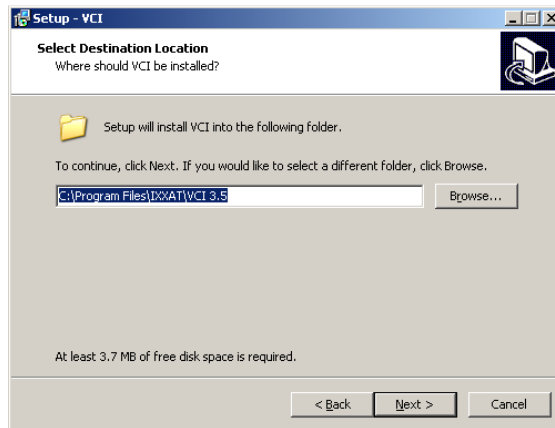
Run the setup:



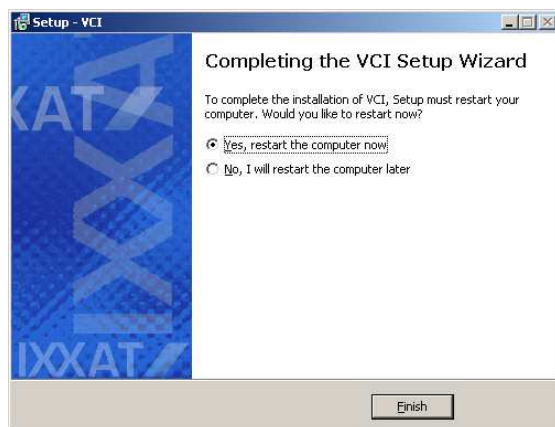
2.2 IXXAT VCI V3 Driver

Start the VCI Driver Setup:

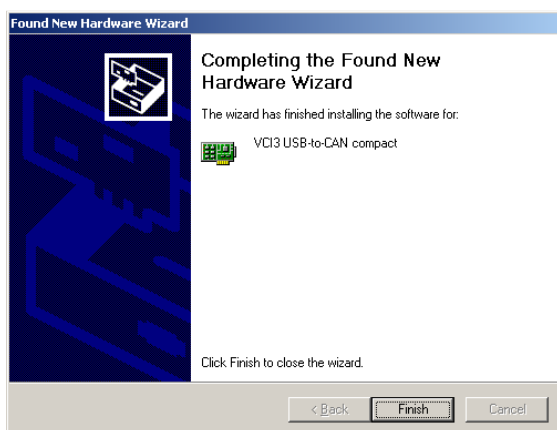
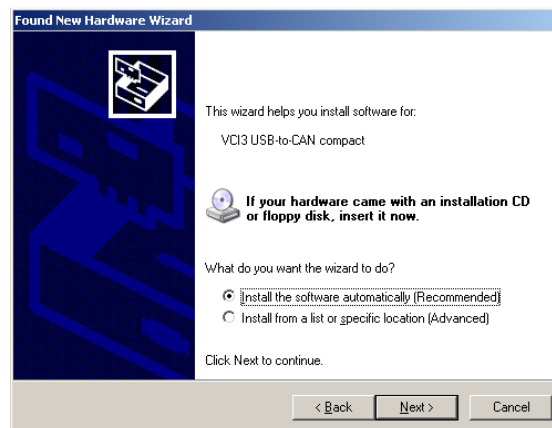




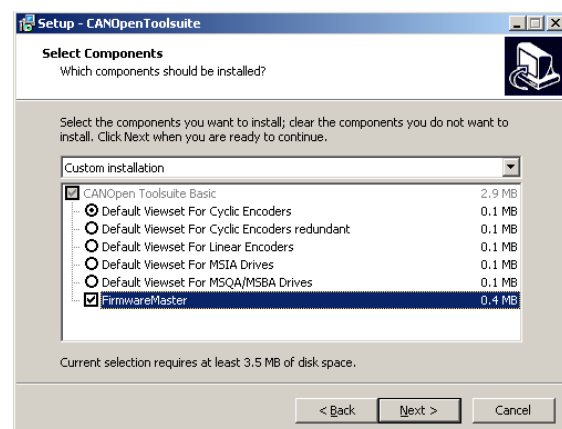
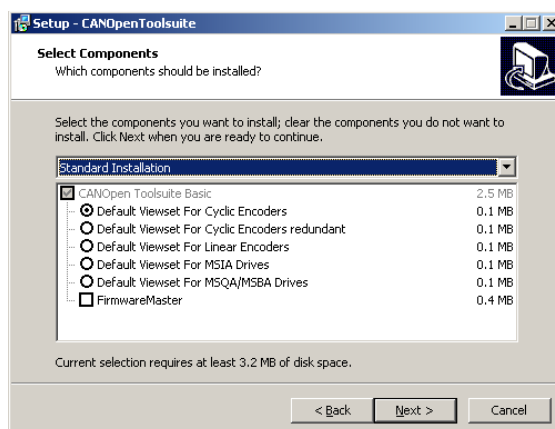
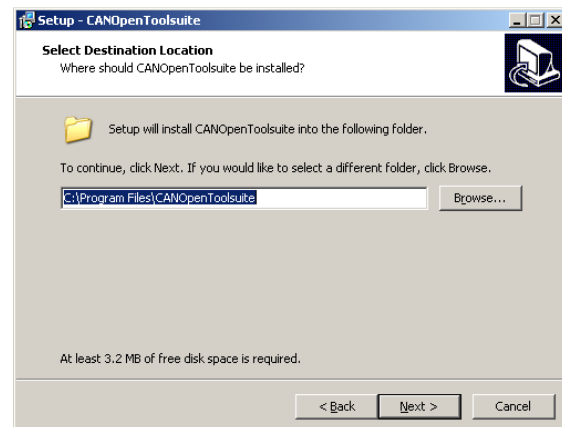
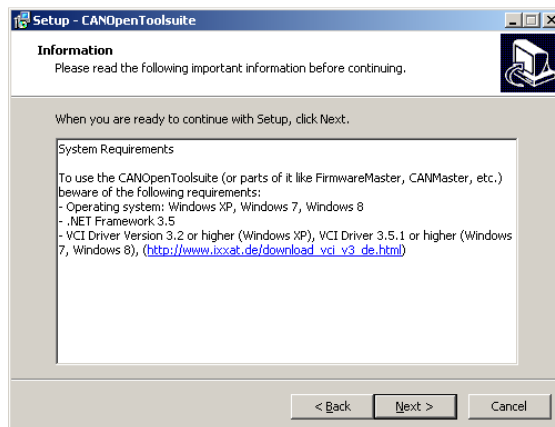
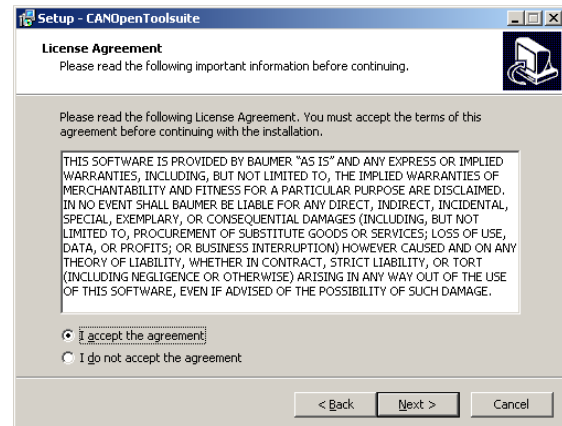
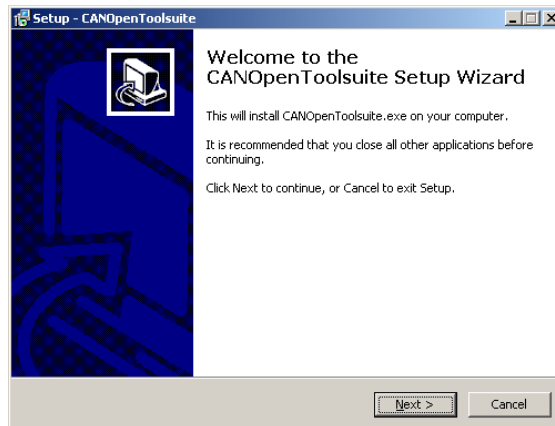
Restart your Computer

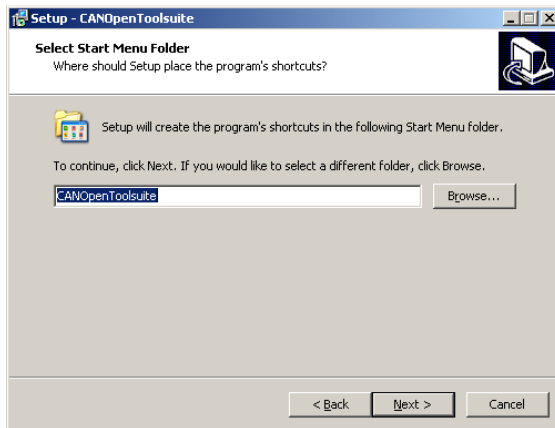


Connect the USB-to-CAN Adapter



2.3 CANOpen Toolsuite





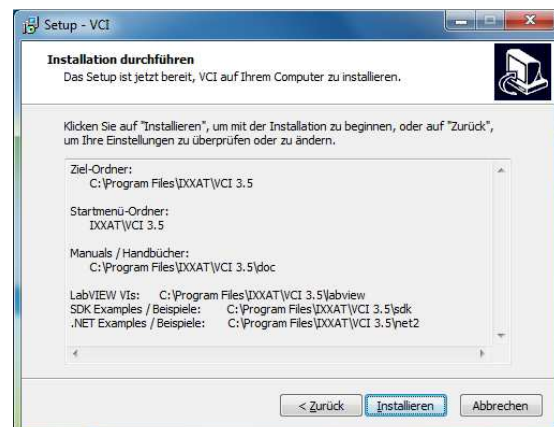
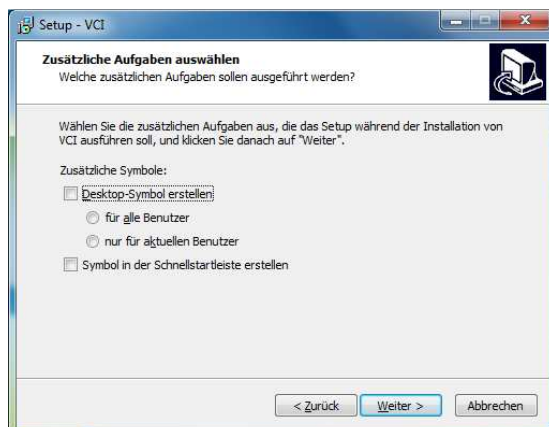
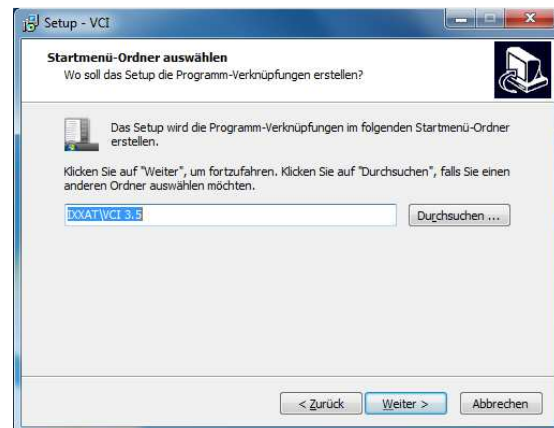
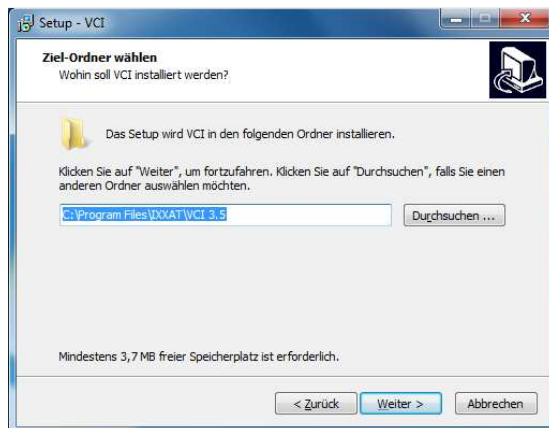
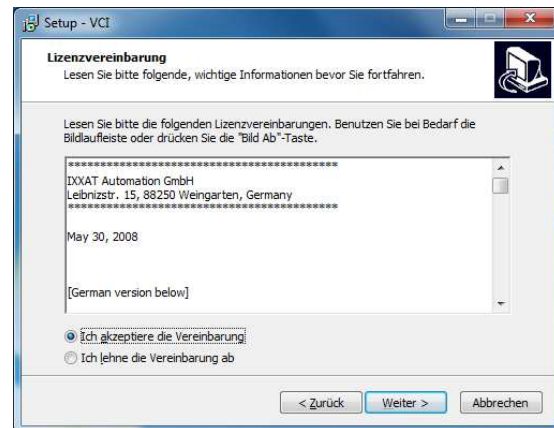
3 Windows 7 (32bit/64bit)

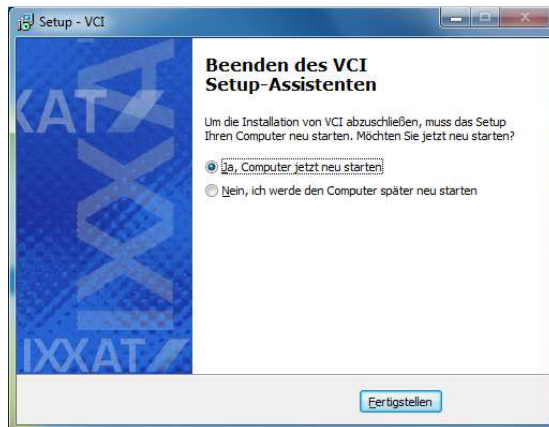
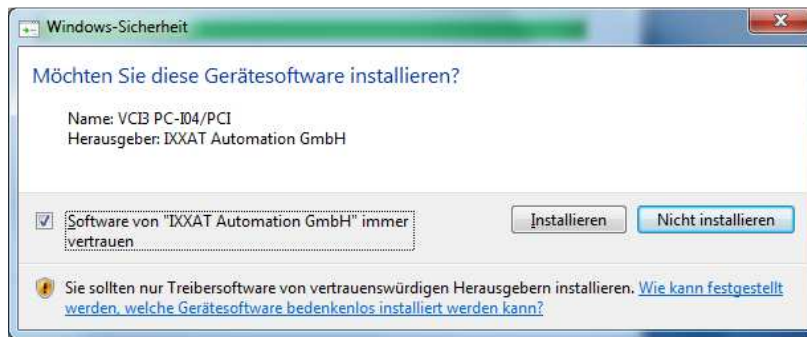
3.1 .NET Framework 3.5

Windows 7 has a preinstalled .NET Framework 3.5. No Addition Framework installations are required.

3.2 IXXAT VCI V3 Driver

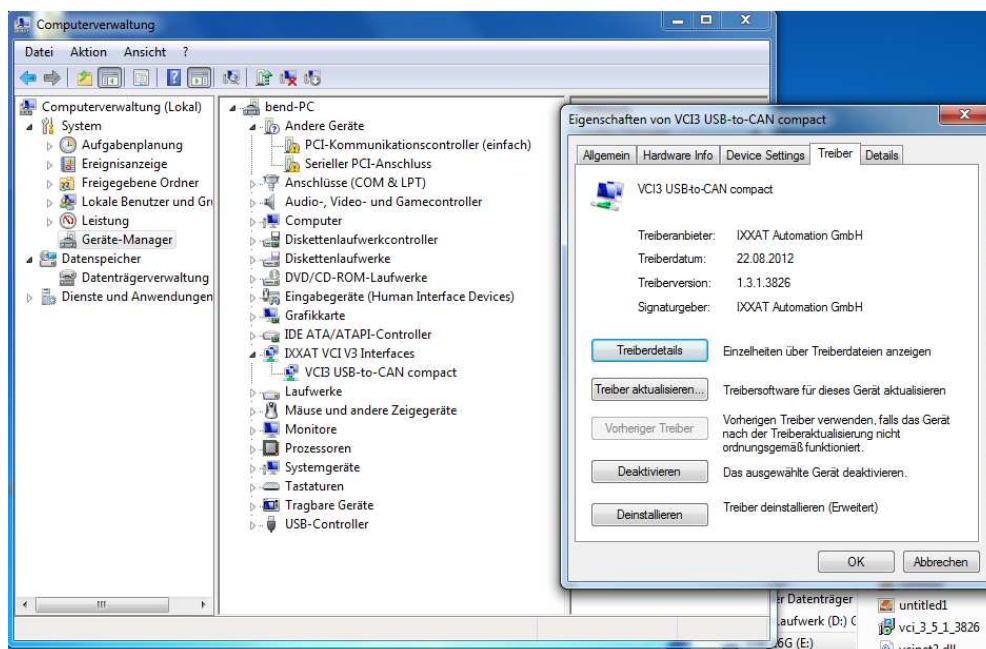
To install the driver for the IXXAT USB-to-CAN Adapter Administrative rights are required.





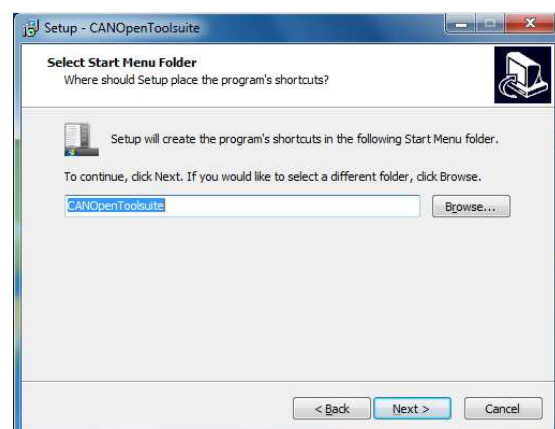
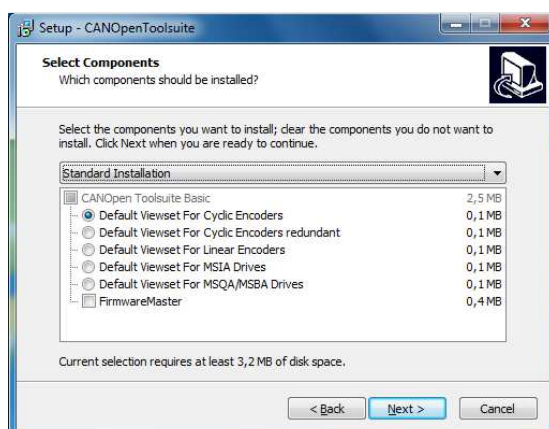
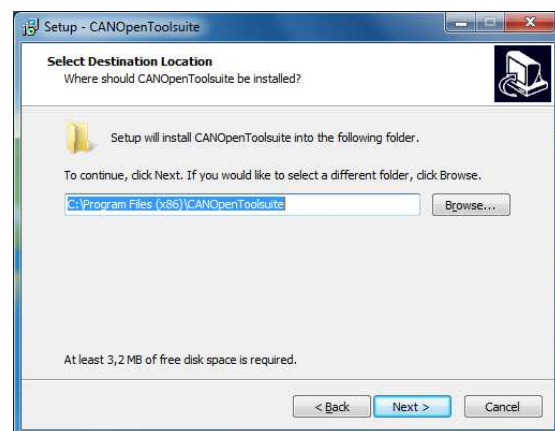
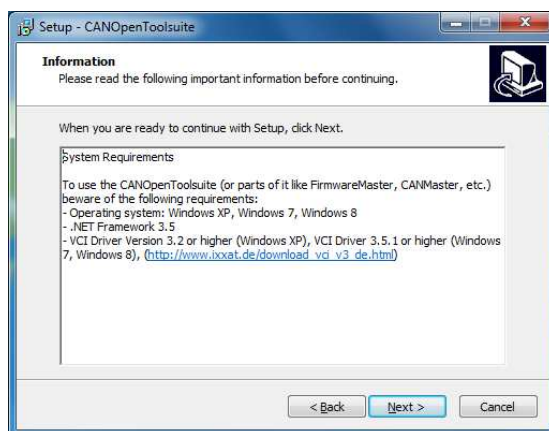
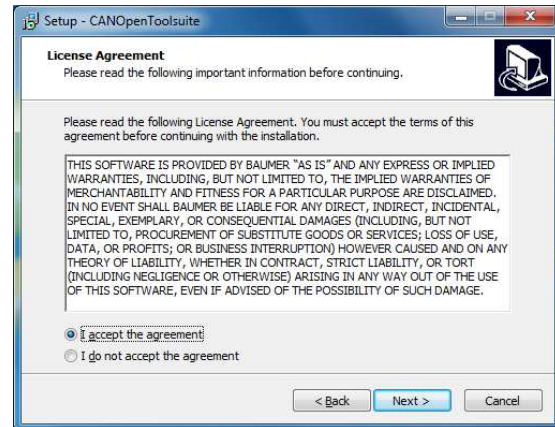
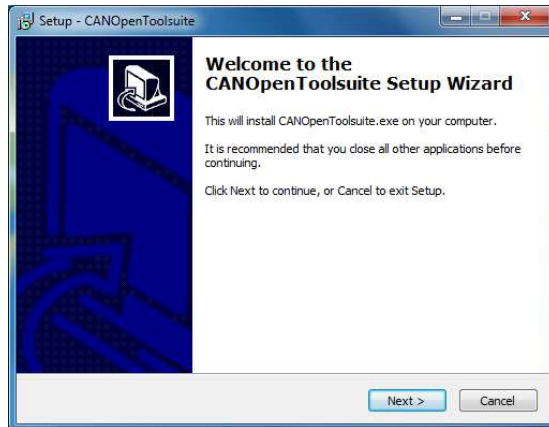
Connect the adapter to the USB Port. The Interface will be installed automatically.

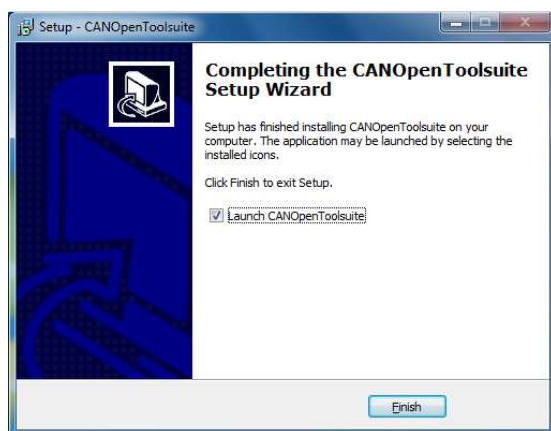
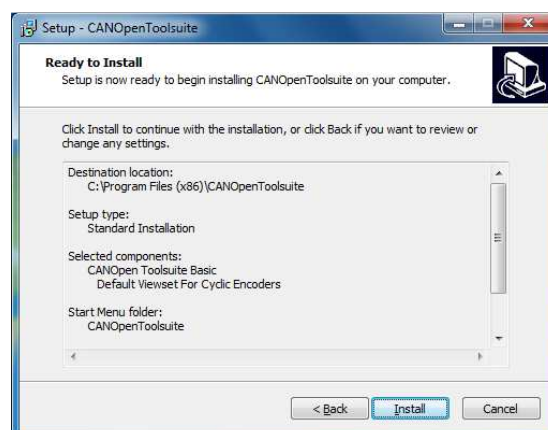
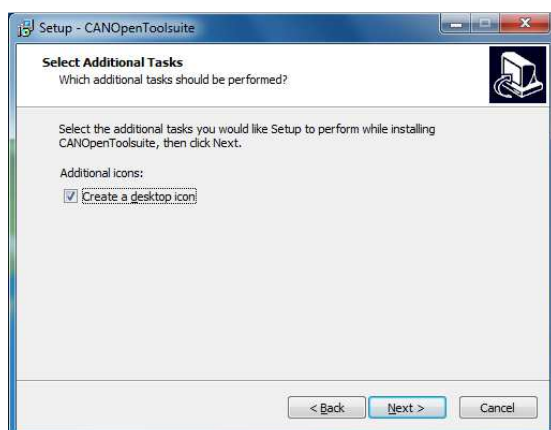
The installed driver can be checked in the device manager.



3.3 CANOpen Toolsuite

To Install the CANOpen Toolsuite to the System Drive C: Administration Rights are required.



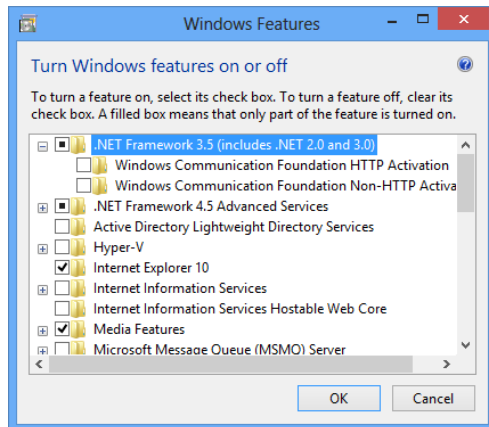


4 Windows 8 (32bit/64bit)

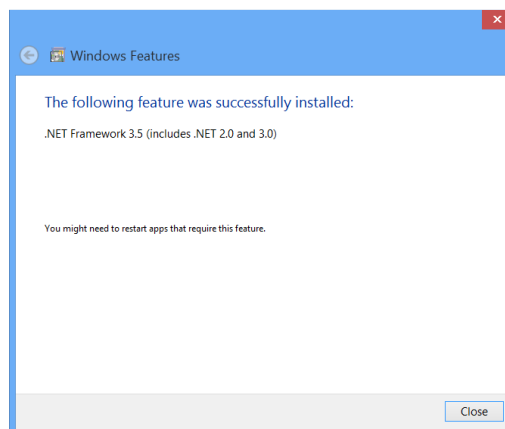
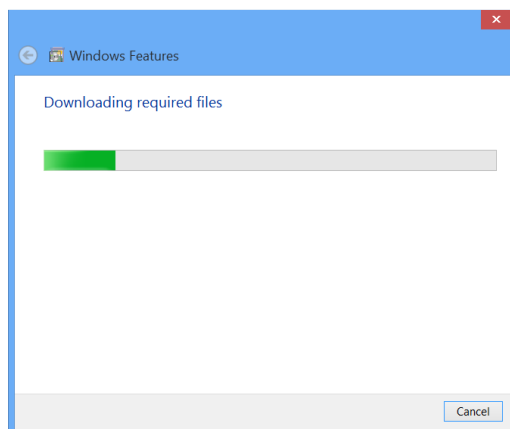
4.1 .NET Framework 3.5

You can install the required .NET Framework 3.5 out of the Windows 8 Features:

In Control Panel, choose Programs and Features, choose Turn Windows features on or off, and then select the .NET Framework 3.5 (includes .NET 2.0 and 3.0) check box. This option requires an Internet connection. You do not need to select the child items.

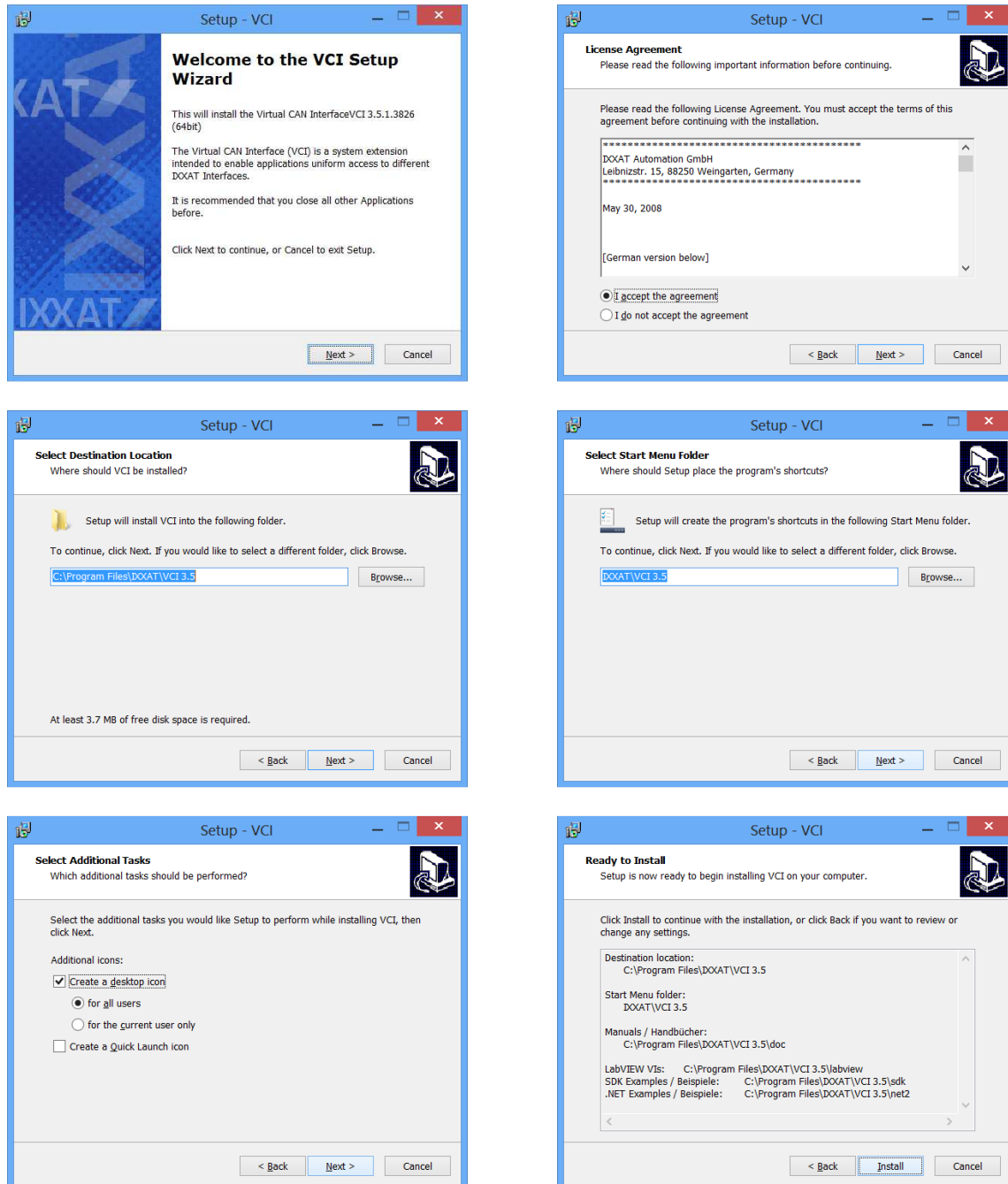


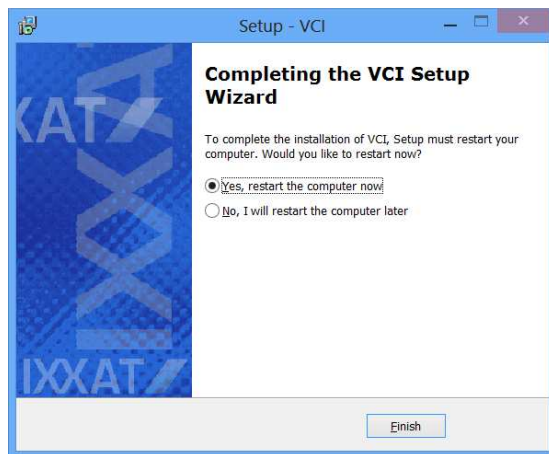
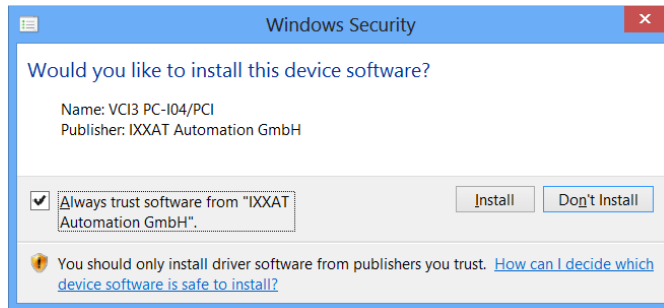
Windows searches and downloads the required files from the internet.



4.2 IXXAT VCI V3 Driver

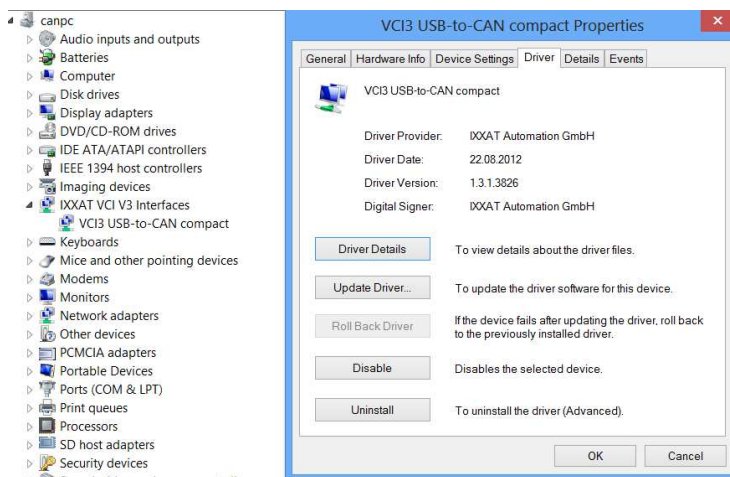
To install the driver for the IXXAT USB-to-CAN Adapter Administrative rights are required.





Connect the adapter to the USB Port. The Interface will be installed automatically.

The installed driver can be checked in the device manager.



4.3 CANOpen Toolsuite

To Install the CANOpen Toolsuite to the System Drive C: Administration Rights are required.

