



QuickStart Guide

Baumer Sensor Suite

EN

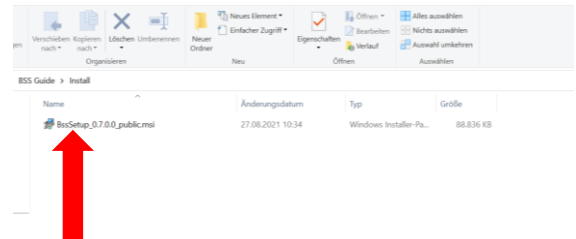
Table of Content

1	INSTALLATION	3
1.1	START INSTALLER.....	3
1.2	SETUP WIZARD	3
1.3	ACCEPT END-USER LICENSE AGREEMENT.....	3
1.4	CHOOSE INSTALLATION TYPE	4
1.5	SELECT INSTALLATION FOLDER	4
1.6	READY TO INSTALL	4
1.7	FINISH INSTALLATION.....	5
2	FIRST START OF THE BSS	5
2.1	START BAUMER SENSOR SUITE	5
2.2	START REGISTRATION	5
2.3	REGISTRATION	5
2.4	FINISH REGISTRATION	6
2.5	BSS LOGIN	6
3	UPDATE SOFTWARE	6

1 Installation

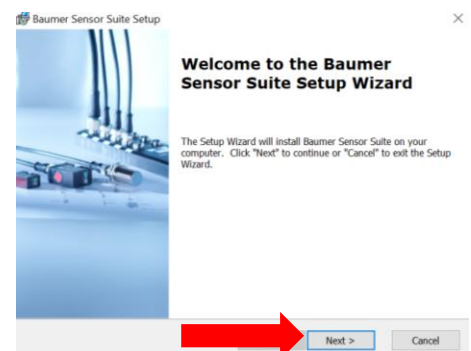
1.1 Start Installer

To start the installation, double click on the setup file



1.2 Setup Wizard

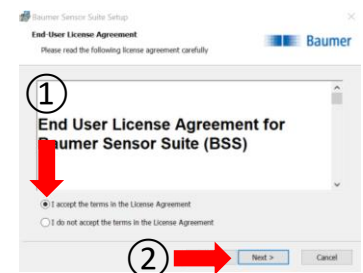
The Setup Wizard will start automatically. Click on "Next"



1.3 Accept End-User License Agreement

To accept the "End-User License Agreement"

- 1.) Click on the checkbox "I accept the terms in the License Agreement"
- 2.) Then click on the button "Next"



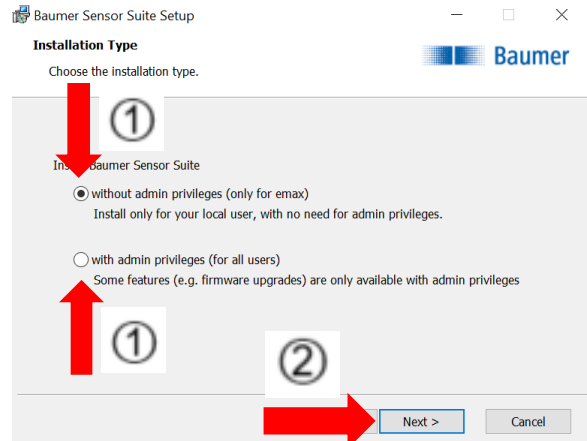
1.4 Choose Installation Type

You can choose between an installation with administrator rights or an installation without administrator rights.

1.) In the installation with administrator rights, the software is installed for all users and you have the possibility to install device drivers. Depending on the Windows / IT settings, you may need to enter the admin username and password if you select this option.
or...

1.) In the installation without administrator rights, the software is only installed for your user and it is not possible to install specific device drivers.

2.) Select one of the two options and click on the "Next" button.

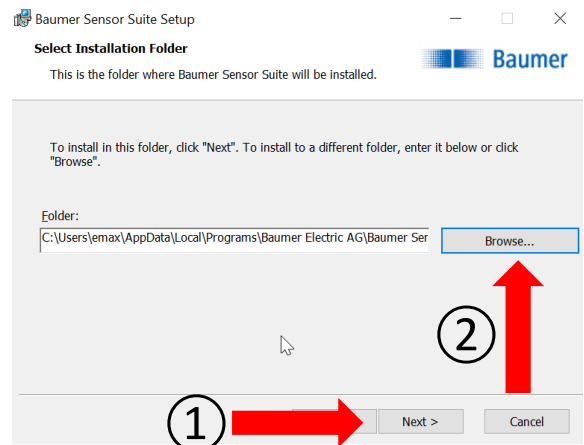


1.5 Select Installation Folder

Now you can select the installation location of the software:

1.) By clicking on the button "next", the BSS will be saved automatically under the default installation path. We recommend to use that option.

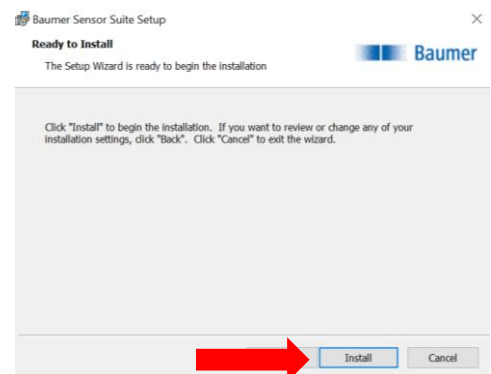
2.) Alternatively, you can click on the button "Browse", which opens a file directory and you can select the desired installation location. Then you also have to press the "next" button



1.6 Ready to Install

To install the BSS now, just click on the "Install" button.

The installation will start automatically and may take a few minutes.

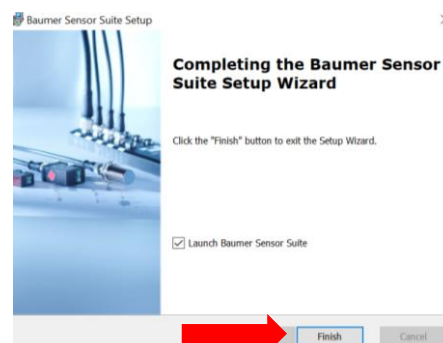


1.7 Finish Installation

The software is now successfully installed.

If you check the box "Launch Baumer Sensor Suite", the software will be launched automatically after the installation.

To finish the installation, click on the button "Finish".



2 First Start of the BSS

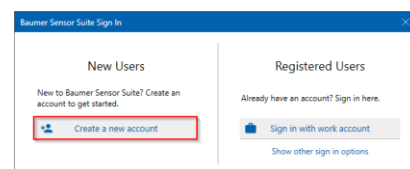
2.1 Start Baumer Sensor Suite

To start the software, double click on the BSS Icon.



2.2 Start Registration

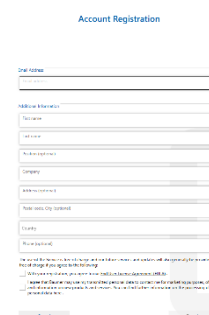
To register for the BSS you have to click on "Create a new account"



2.3 Registration

Please fill in your data, accept the "EULA" and the data privacy and click "Register" at the end.

If the step fails, please write an e-mail to support.bss@baumer.com

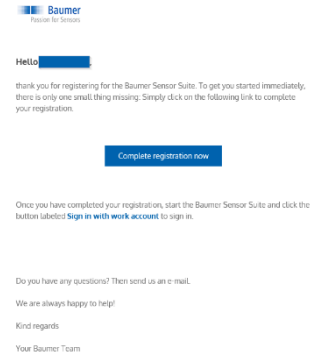


2.4 Finish Registration

You will receive an email from noreply@baumer.com

Please click on the blue button “Complete registration now”

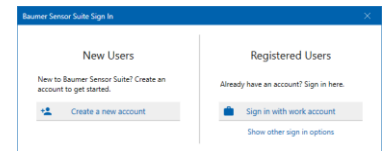
After that please go back to the Baumer Sensor Suite



2.5 BSS Login


Back in the BSS you have two options:


- a) **Sign in with work account**
Your company uses Microsoft Azure Active Directory and we set up our Baumer Sensor Suite user management (which is also Azure Active Directory) that users with an existing Active Directory Account can use their account instead of creating a new one.
- b) **Show other Sign in options → Sign in with personal Account**
If option a) does not work, please register again with your email address and then click on the yellow text. Then we create a separate account and you should receive an email with an initial password.



Registered Users

Already have an account? Sign in here.

 Sign in with work account

 Sign in with personal account

Which account type do I have?

The registration is complete and you are now ready to use the BSS

3 Update Software

Before you get started it is advisable to check for updates.

To update the software please press “About” in the lower left corner. Now the BSS automatically checks for updates. If there is an update available, just press “Install”.

After the installation please restart the BSS. You now have the latest version and are ready to use the BSS.

