

PF20H

Hygienic flow sensor

PF20H-11.010.####.20.#.0000.0

Visión de conjunto

- SIP- capable without restrictions up to 150 °C / 24h
- Broad portfolio of process connections
- Flow and temperature measurement in a single sensor
- Compact and robust
- Available with IO-Link interface



Imagen similar



Datos técnicos

Características

Tiempo de inactividad en el escalón de temperatura	< 10 s
Error máx de medida	± 2 % FSR , medida velocidad de flujo ± 8 cm/s , medida velocidad de flujo ± 1 °C , medida temperature @velocidad de flujo > 0 cm/s
Rango de medida, Velocidad de flujo	10 ... 400 cm/s
Rango de medida, temperatura	-25 ... 150 °C
Tiempo de respuesta, T90	< 5 s

Condiciones de proceso

Temperatura de proceso	-25 ... 125 °C , medida velocidad de flujo -25 ... 150 °C , medida temperature @velocidad de flujo > 0 cm/s
Presión de proceso	Consulte la sección "Condiciones de funcionamiento".

Conexión a proceso

Conexiones	Ver sección "Dibujos dimensionales"
Posición de montaje	Indiferente
Material partes mojadas	AISI 316L (1.4404)
Rugosidad superficie partes mojadas	Ra ≤ 0.8 µm

Condiciones ambientales

Temperatura operación	-25 ... 80 °C
Temperatura almacenaje	-25 ... 80 °C
Grado de protección (EN 60529)	IP67 IP68 30 min. a 1 mH2O IP69K , con el cable apropiado
Humedad	≤ 100 % RH , condensado
Impacto(EN 60068-2-27)	30 g / 11 ms, 6 impulsos por eje y dirección

Condiciones ambientales

Vibración (sinusoidal) (EN 60068-2-6)	5 g (10 ... 2000 Hz)
---------------------------------------	----------------------

Señal de salida

Salida de corriente	4 ... 20 mA
Salida de tensión	0 ... 10 V
Tipo de salida	Digital (push-pull) NPN PNP
Lógica interruptor	Activa alta Activa baja Normalmente cerrado (NC) Normalmente abierto (NO)

Caida de tensión	< 2 V, salida de conmutación
Corriente nominal	100 mA , max.
Corriente residual	< 250 µA
Protección ante corto-circuito	Si

Interfaz	IO-Link 1.1
----------	-------------

Carcasa

Stilo	Transmisor compacto
Tamaño global	Ver sección "Dibujos dimensionales"
Material	Acero inoxidable

Conexión eléctrica

Conector	M12-A, 4-pin
----------	--------------

Fuente de alimentaci3n

Tensi3n alimentaci3n	12 ... 32 V DC , con 2 x 4 20 mA 18 ... 30 V DC , con IO-Link
Tiempo de encendido	10 s , max.
Protecci3n contra polaridad inversa	Si

PF20H

Hygienic flow sensor

PF20H-11.010.####.20.#.0000.0

Datos técnicos

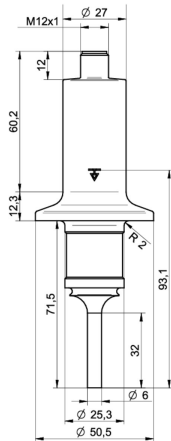
Aprobaciones y certificaciones

Hygiene FDA compliant
EHEDG EL Class I

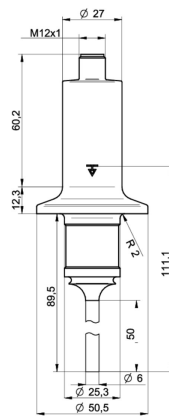
Operating conditions

Process connection	BCID	Process pressure (bar)
G 1/2 A hygienic	A03	-1 ... 100
G 1/2 A hygienic sealing	B03	-1 ... 10
BHC 3A DN 38	B01	-1 ... 68
Tri-Clamp Ø 34.0	C02	-1 ... 68
Tri-Clamp Ø 50.5	C04	-1 ... 68
Tri-Clamp Ø 64.0	C05	-1 ... 68
DIN 11851 (dairy pipe connection), DN 25	D01	-1 ... 40
DIN 11851 (dairy pipe connection), DN 40	D03	-1 ... 40
DIN 11851 (dairy pipe connection), DN 50	D04	-1 ... 25
Varivent® DN 25; 1" (Type F), Ø 50	V01	-1 ... 16
Varivent® DN 32 ... 125; 1 1/2" ... 6" (Type N), Ø 68	V02	-1 ... 16

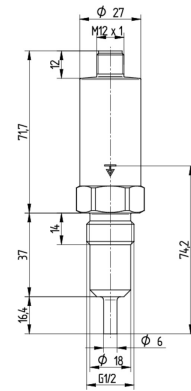
Dibujos dimensionales (mm)



B01-B013
BHC 3A DN 38
Sensor length 32 mm (BCID: B01)



B01-B015
BHC 3A DN 38
Sensor length 50 mm (BCID: B01)



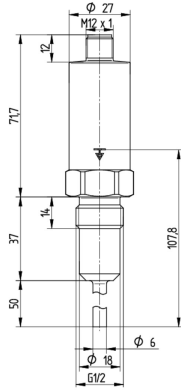
A03-A031 1/2 A hygienic Sensor length 16.4 mm (BCID: A03)

PF20H

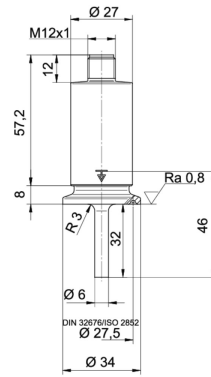
Hygienic flow sensor

PF20H-11.010.####.20.#.0000.0

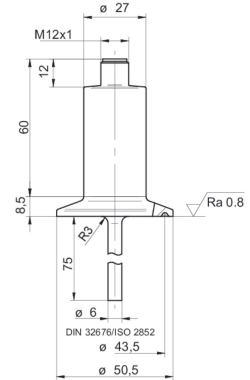
Dibujos dimensionales (mm)



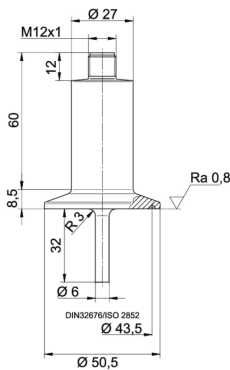
A03-A035
G 1/2 A hygienic
Sensor length 50 mm (BCID: A03)



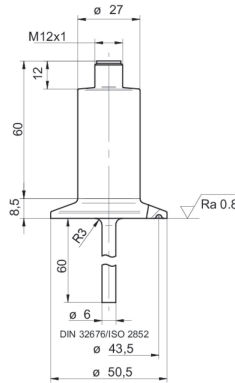
C02-C023
Tri-Clamp Ø 34.0
Sensor length 32 mm (BCID: C02)



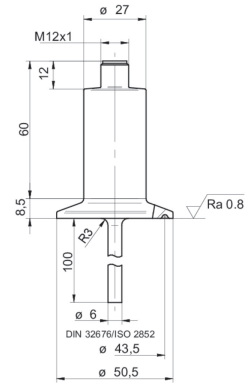
C04-C042
Tri-Clamp Ø 50.5
Sensor length 75 mm (BCID: C04)



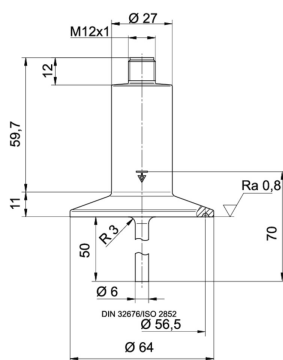
C04-C043
Tri-Clamp Ø 50.5
Sensor length 32 mm (BCID: C04)



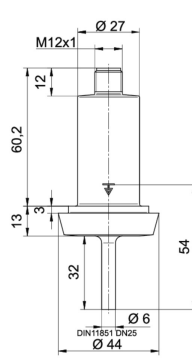
C04-C046
Tri-Clamp Ø 50.5
Sensor length 60 mm (BCID: C04)



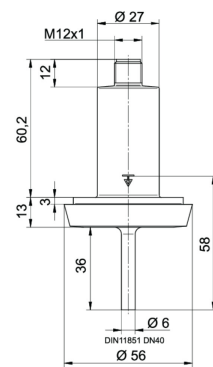
C04-C047
Tri-Clamp Ø 50.5
Sensor length 100 mm (BCID: C04)



C05-C055
Tri-Clamp Ø 64.0
Sensor length 50 mm (BCID: C05)



D01-D013
DIN 11851 (dairy pipe connection)
DN 25
Sensor length 32 mm (BCID: D01)



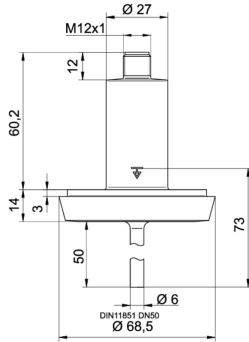
D03-D034
DIN 11851 (dairy pipe connection)
DN 40
Sensor length 36 mm (BCID: D03)

PF20H

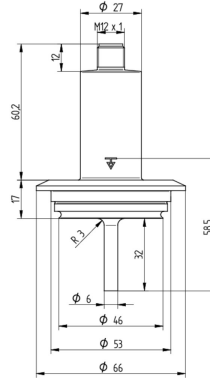
Hygienic flow sensor

PF20H-11.010.####.20.#.0000.0

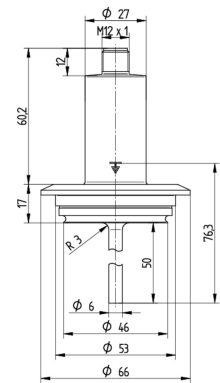
Dibujos dimensionales (mm)



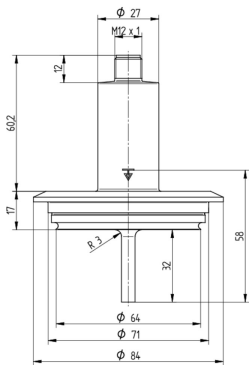
D04-D045
DIN 11851 (dairy pipe connection)
DN 50
Sensor length 50 mm (BCID: D04)



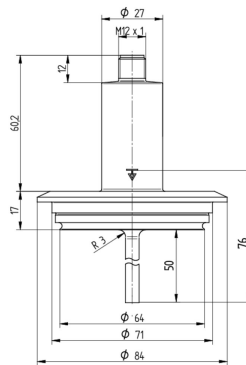
V01-V013
Varivent® DN 25; 1" (Type F)
Ø 50
Sensor length 32 mm (BCID: V01)



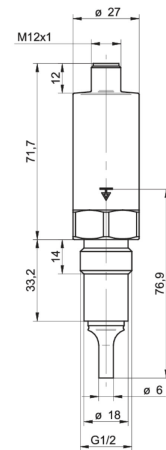
V01-V015
Varivent® DN 25; 1" (Type F)
Ø 50
Sensor length 50 mm (BCID: V01)



V02-V023
Varivent® DN 32 ... 125; 1 1/2" ... 6" (Type N)
Ø 68
Sensor length 32 mm (BCID: V02)

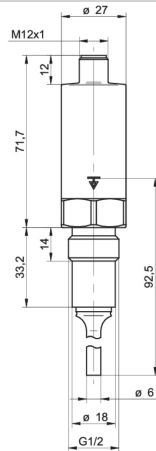


V02-V025
Varivent® DN 32 ... 125; 1 1/2" ... 6" (Type N)
Ø 68
Sensor length 50 mm (BCID: V02)



B03-B031
G 1/2 A hygienic sealing
Sensor length 16.4 mm (BCID: B03)

Dibujos dimensionales (mm)



B03-B039
G 1/2 A hygienic sealing
Sensor length 30 mm (BCID: B03)

PF20H

Hygienic flow sensor

PF20H-11.010.####.20.#.0000.0

Conexión eléctrica

Output signal	Equivalent circuit	Electrical connection	Function	Pin assignment
Multi-parameter output 4 ... 20 mA, 3-wire (flow) 4 ... 20 mA, 3-wire (temperature)			+Vs Iout (flow) Iout (temperature) GND (0 V) Frame ground	1 2 4 3 Plug thread
Programmable output Factory setting with IO-Link			+Vs SW1 (IO-Link) Iout GND (0 V) Frame ground	1 4 2 3 Plug thread
Programmable output Configuration programmable by customer			+Vs SW1 (IO-Link) Uout GND (0 V) Frame ground	1 4 2 3 Plug thread
Programmable output Configuration programmable by customer			+Vs SW1 (IO-Link) SW2 GND (0 V) Frame ground	1 4 2 3 Plug thread
Programmable output Configuration programmable by customer			+Vs SW1 (IO-Link) SW2 GND (0 V) Frame ground	1 4 2 3 Plug thread
Programmable output Configuration programmable by customer			+Vs SW1 (IO-Link) SW2 GND (0 V) Frame ground	1 4 2 3 Plug thread

Información para pedido

Tecla de pedido - Posibilidades de configuración ver página web

Product	PF20H	-	1	1	.	010	.	####	.	2	0	.	#	.	0	00	0	.	0	
Version	Version for Water																			1
Housing	Stainless steel, AISI 316L (1.4404)																			1
Electrical connection	M12-A, 4-pin, stainless steel					010														

PF20H

Hygienic flow sensor

PF20H-11.010.####.20.#.0000.0

Información para pedido
Tecla de pedido - Posibilidades de configuración ver página web

	PF20H	-	1	1	.	010	.	####	.	2	0	.	#	.	0	00	0	.	0
Process connection																			
G 1/2 A hygienic (A03), Sensor length: 16.4 mm ⁽²⁾								A031											
G 1/2 A hygienic (A03), Sensor length: 50 mm ⁽²⁾								A035											
ISO 2852 (Tri-Clamp), DN 21.3, Ø 34.0 (C02), Sensor length: 32 mm ⁽²⁾								C023											
ISO 2852 (Tri-Clamp), DN 33.7; 38, Ø 50.5 (C04), Sensor length: 75 mm ⁽¹⁾								C042											
ISO 2852 (Tri-Clamp), DN 33.7; 38, Ø 50.5 (C04), Sensor length: 32 mm ⁽¹⁾								C043											
ISO 2852 (Tri-Clamp), DN 33.7; 38, Ø 50.5 (C04), Sensor length: 60 mm ⁽¹⁾								C046											
ISO 2852 (Tri-Clamp), DN 33.7; 38, Ø 50.5 (C04), Sensor length: 100 mm ⁽¹⁾								C047											
ISO 2852 (Tri-Clamp), DN 40; 51, Ø 64.0 (C05), Sensor length: 50 mm ⁽¹⁾								C055											
DIN 11851 (dairy pipe connection), DN 25 (D01), Sensor length: 32 mm ⁽¹⁾								D013											
DIN 11851 (dairy pipe connection), DN 40 (D03), Sensor length: 36 mm ⁽¹⁾								D034											
DIN 11851 (dairy pipe connection), DN 50 (D04), Sensor length: 50 mm ⁽¹⁾								D045											
Varivent® DN 32 ... 125; 1 1/2 ... 6 (Type N), Ø 68 (V02), Sensor length: 32 mm ⁽³⁾								V023											
Varivent® DN 32 ... 125; 1 1/2 ... 6 (Type N), Ø 68 (V02), Sensor length: 50 mm ⁽³⁾								V025											
Varivent® DN 25; 1 (Type F), Ø 50 (V01), Sensor length: 32 mm ⁽⁴⁾								V013											
Varivent® DN 25; 1 (Type F), Ø 50 (V01), Sensor length: 50 mm ⁽⁴⁾								V015											
BHC 3A DN 38 (B01), Sensor length: 32 mm ⁽³⁾								B013											
BHC 3A DN 38 (B01), Sensor length: 50 mm ⁽³⁾								B015											
G 1/2 A hygienic sealing, Sensor length: 16.4 mm ⁽⁵⁾								B031											
G 1/2 A hygienic sealing, Sensor length: 30 mm ⁽⁵⁾								B039											
Process connection material																			
AISI 316L (1.4404)										2									
Seal																			
None																			0
Output signal																			
Multi-parameter output, 2 x 4 - 20 mA (3-wire)																			0
Programmable output, IO-Link																			1
Explosion protection																			
Without																			0
Industrial approvals																			
Standard																			00
Special approvals																			
Standard																			0
Configuration																			
Factory settings																			0

PF20H

Hygienic flow sensor

PF20H-11.010.####.20#.0000.0

Información para pedido

Tecla de pedido - Posibilidades de configuración ver página web

- (1) EHEDG only with special gasket
- (2) EHEDG not included
- (3) EHEDG included
- (4) EHEDG not included, only for tank installation
- (5) EHEDG only with suitable weld-in sleeves or adapters from Baumer